



EQUIPMENT SOLUTIONS

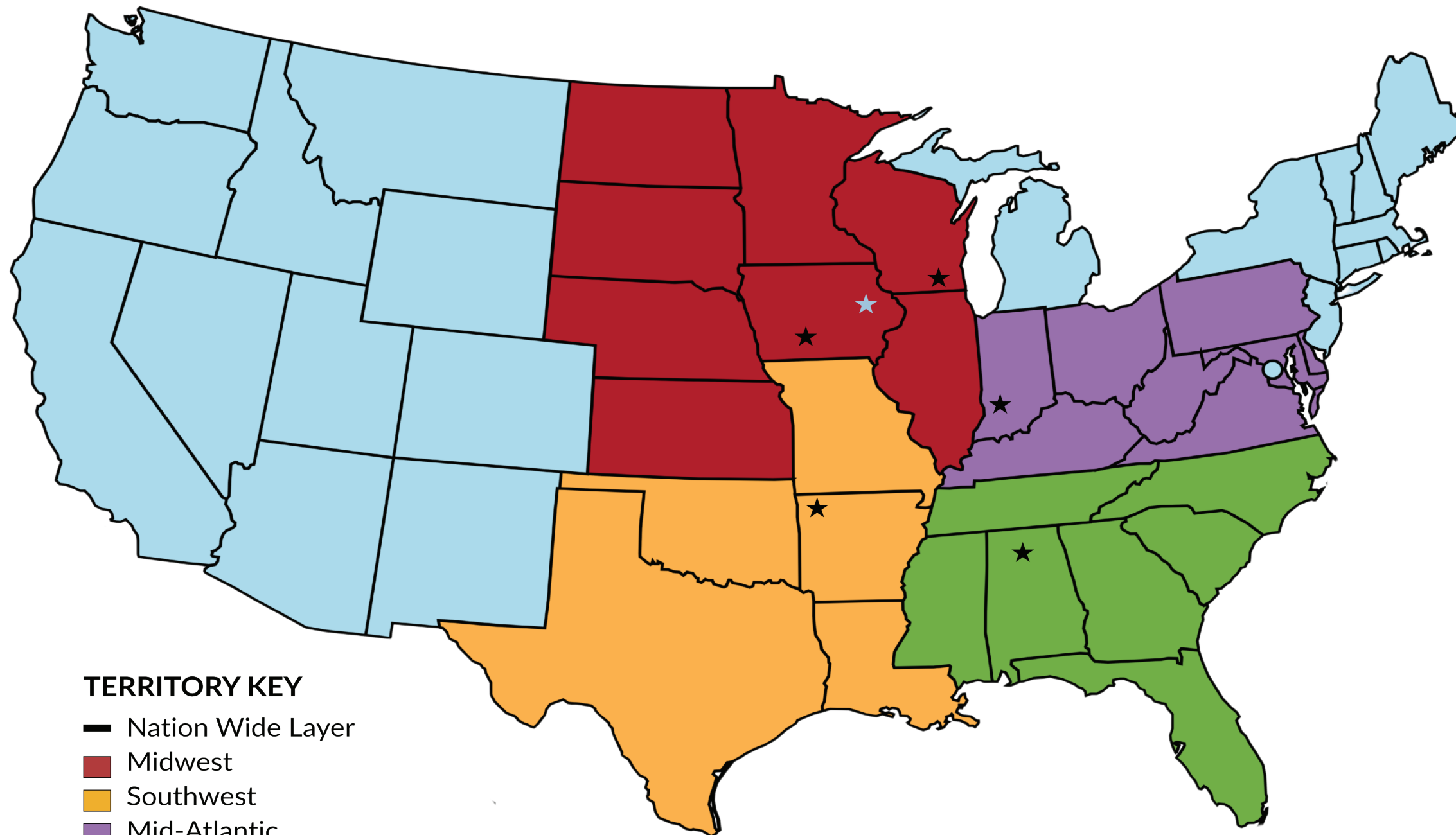
FOR PROTEIN PRODUCERS
Volume 26

Bringing you proven and tested
products since 1973



MEET YOUR DOUBLE L SALES PROFESSIONALS

Since 1973, Double L Group has committed to providing high-quality products and services worldwide that are based on value, customer needs, and excellent sales support. Our team of dedicated professionals are ready to help you choose the right products and answer any questions about installation. Contact us today!



TERRITORY KEY

- Nation Wide Layer
- Midwest
- Southwest
- Mid-Atlantic
- Southeast
- Home Office



Nick Alt
Layer Sales Manager
 nalt@doublel.com
 Cell: (612) 750 - 3539
 Direct: (563) 279 - 0799
 ★ Whitewater, Wisconsin



Joe Kraber
Midwest Sales Manager
 jkraber@doublel.com
 Cell: (515) 250 - 0883
 Direct: (563) 207 - 3003
 ★ Granger, Iowa



Justin Lowe
Mid-Atlantic Sales Manager
 jlowe@doublel.com
 Cell: (260) 726 - 5569
 Direct: (563) 538 - 5285
 ★ Farmersburg, Indiana



Chris Hill
Southwest Sales Manager
 cmhill@doublel.com
 Cell: (501) 940 - 3662
 Direct: (563) 538 - 5280
 ★ Bentonville, Arkansas.



Kyle Burns
Southeast Sales Manager
 kburns@doublel.com
 Cell: (256) 962 - 0635
 Direct: (563) 538 - 5282
 ★ Cullman, Alabama.



Elizabeth Beeler
Vice President of Sales
 ebeeler@doublel.com
 Cell: (563) 219 - 4774
 Direct: (563) 538 - 5279
 ★ Dyersville, Iowa



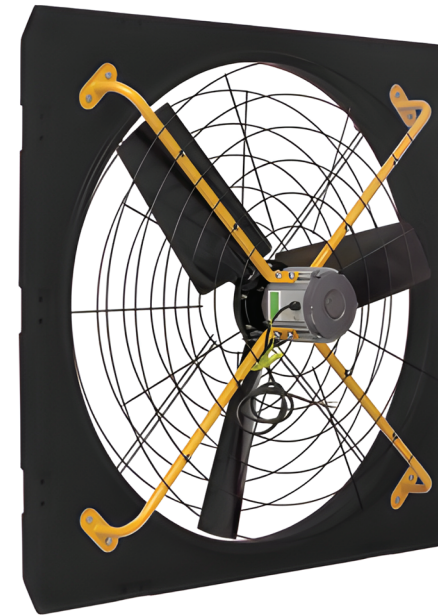
TABLE OF CONTENTS

Meet Our Team	2-3
Table of Contents.....	4
Circulation Fans.....	5-7
Stir Fans.....	8-9
Exhaust Fans	10-11
Darkout	12
Shutters	13-14
Ceiling Inlets.....	15-24
Actuated Wall Inlets	25-28
Wall Inlets	29-37
Gravity Wall Inlets	38-39
Wind/Sun Deflectors	40-41
Winch Systems	42-43
Rack & Pinion.....	44-45
Tunnel Doors.....	46
Cooling Systems	47-49
Pig Mat	50
Nursery Floor.....	51-52
Permabeam	53
Farrowing Floor	54-57
Poultry Floor	58-59
Multi-Protein Accessories	60
Swine Accessories.....	61-62
About Us	64



DX PANEL FAN

Part # DX482, DX484



- Balanced plastic blades for consistent, reliable performance
- Durable plastic housing designed for long-term use and zero rust
- High airflow with low noise for a more comfortable environment
- Protective steel mesh on both the front and back for added safety
- Up to eight mounting points for flexible installation options
- Customizable voltage and frequency to match your setup



DX COOLING FAN

Part # DX362, DX364



- Direct-drive design with motor-to-blade connection for a simple, low-maintenance build
- Stable performance with an easy installation process; galvanized shell resists corrosion for extended service life
- Permanent-magnet brushless motor offers high efficiency, broad operating range, strong load capacity, and steady speed control
- Integrated microprocessor enables precise digital control and smart drive functions
- Compatible with 0-10V analog control and RS485 communication
- Rated IP67 for protection and insulated to Class F standards



NEW
PRODUCT

DX HANGING FAN

Part # DX552L, DX554L, DX722L, DX724L

- Improved energy efficiency with its EC motor technology
- Operates with a direct drive motor
- Engineered with maintenance free motor
- Optional installation; steel column, structural column, or ceiling hung
- Includes six deflectors used for air direction



NEW
PRODUCT

DX CIRCULATION FAN

Part # DX142, DX182, DX222, DX282

- Variety of sizes to match your requirements
- Orifice around prop for better control of air and higher centerline velocity
- Fiberglass housing for superior corrosion resistance
- Mounting bracket makes for easy angle adjustment
- Enclosed housing throws air further than traditional basket fan



Diameter	Voltage	Hz	HP	CFM
14"	240/480	60	0.16	1400
18"	240/480	60	0.33	2700
22"	240/480	60	0.5	4400
28"	240/480	60	1.5	10430



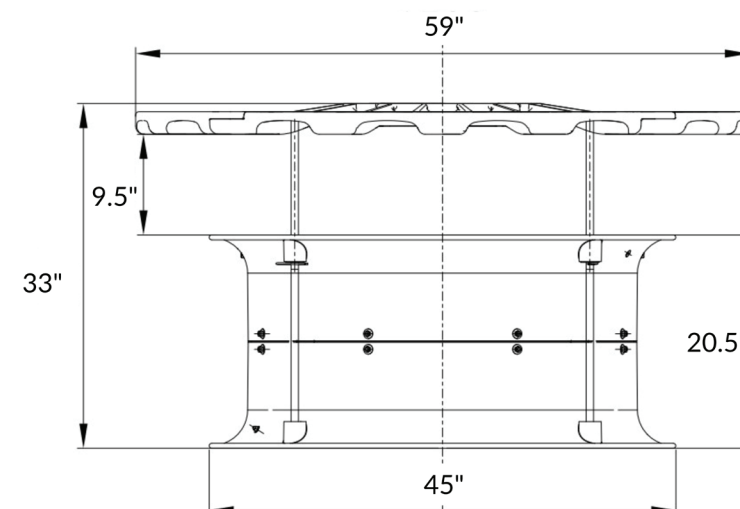
NEW
PRODUCT

DX VERTICAL FAN

Engineered for optimal air circulation, this system efficiently mixes large air volumes, resulting in significant energy savings. In winter, it maintains uniform warmth across the facility, reducing heat output needs.

Part # DXV36

- Constructed from corrosion-resistant materials for long-lasting durability
- Equipped with a maintenance-free, direct-drive motor
- Provides adjustable air distribution across a wide coverage area
- Easily mounts to the ceiling using chain links
- Available with variable speed control for customized performance





DIRECTAIRE PLUS STIR FANS

Steel bearings and 1/5 HP sealed motor for years of long life

- Up 15% more CFM compared to the original DirectAire
- New rotor motor technology allowing the motor to run cooler
- Brushless motor allows for smoother operation
- IP54 motor rating
- Powder coated, steel blades
- Two speed rotor motor
- Included Mounting Bracket



18" Stir Fan

Part 90718
24" diameter x 4.8"
BEES Labs Test c22275

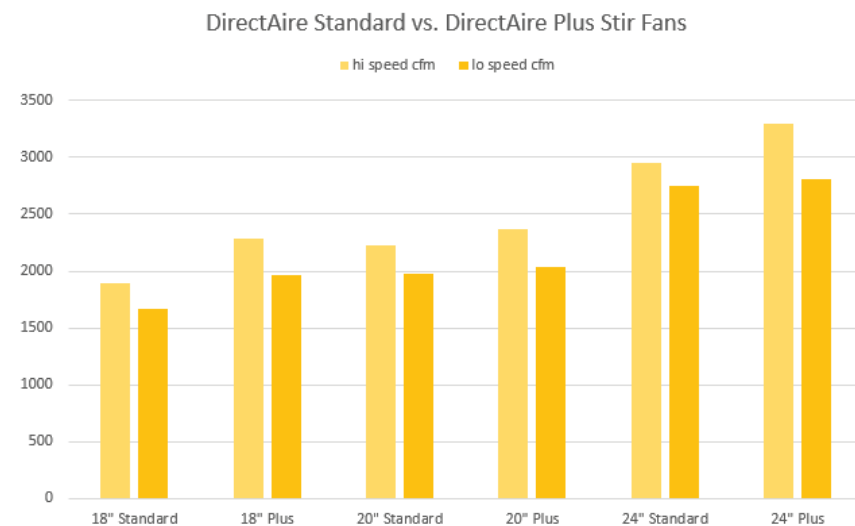
20" Stir Fan

Part 90720
25.6" diameter x 5.1"
BEES Labs Test c22274

24" Stir Fan

Part 90724
30" diameter x 5.6"
BEES Labs Test c22273

BLADE DIAMETER	HP	VOLTS	AMPS	HZ	SPEED	LOW CFM	HIGH CFM	PHASE
18"	1/5	120	1.3	60	2	1970	2280	1
20"	1/5	120	1.3	60	2	2040	2379	1
24"	1/5	120	1.4	60	2	2810	3300	1



DIRECTAIRE STIR FANS

Steel bearings and 1/5 HP sealed motor for years of long life

- Mixes Cold Floor Air with Hot Ceiling Air
- Less Heater Cycles
- Widespread Grill Guard
- Included Mounting Bracket
- 2-speed circulation fan – high and low settings
- Extra Amps to spare
- Excellent Thrust CFM
- UL LISTED AND UL LISTED TO CANADIAN SAFETY STANDARDS



18" Stir Fan

Part 90618
21" diameter x 7.25"
BEES Labs Test c22270

20" Stir Fan

Part 90614
22.8" diameter x 7.3"
BEES Labs Test c22271

24" Stir Fan

Part 90600
29" diameter x 9"
BEES Labs Test c22272

BLADE DIAMETER	HP	VOLTS	AMPS	HZ	SPEED	LOW CFM	HIGH CFM	PHASE
18"	1/5	120	0.94	60	2	1670	1890	1
20"	1/5	120	1.07	60	2	1980	2230	1
24"	1/5	120	1.2	60	2	2750	2950	1

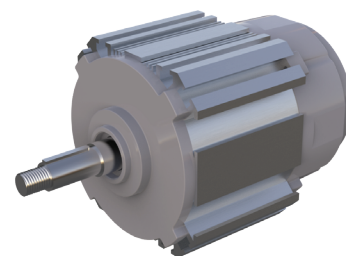
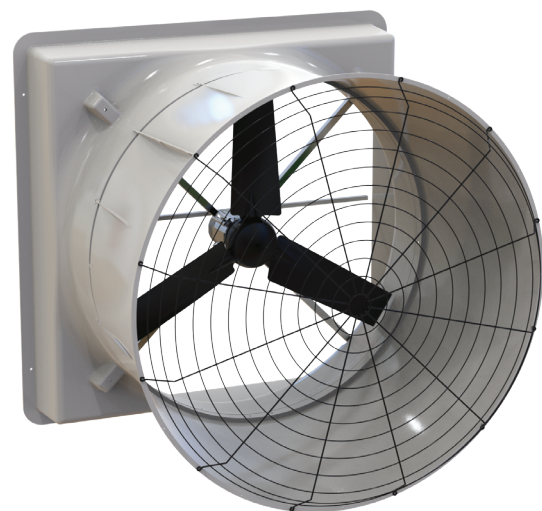
"Used the stir fans in my houses and really helped even out the temperature distribution in winter to save gas. Have had these three years and they're still working great!"



NEW
PRODUCT

DIRECT X EXHAUST FAN

Part # DRX24, DRX36, DRX48, DRX52, DRX57

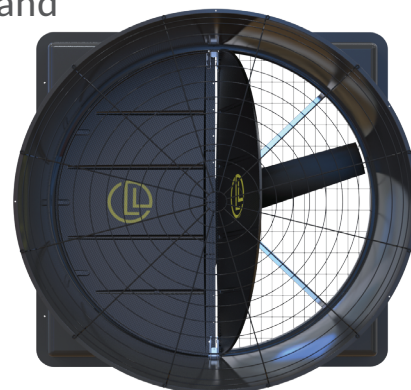


Features

- Brushless Magnet EC Motor
- Fiberglass Reinforced SMC Shell
- Incorporated Ecotight Shutter or Butterfly Door
- Variable Speed/Soft Start
- Robust Direct-Drive Structure

Benefits

- Delivers exceptional performance: air volume, efficiency, and superior corrosion resistance.
- Robust housing slides mount through the wall, with a cone design that's no wider than the housing, allowing for closer spacing than traditional fans.
- Variable speed motor offers a wide operating range, superb air flow ratio, and excellent efficiency, with no maintenance required for belts, pulleys, or tensioners.
- Durable shutter has 8 years of industry performance and provides a superior seal while improving air volume.
- Doors fall back in place without a spring due to their unique angled installation.
- Direct drive fan with soft start allows for longer life on the motor and less wear on the components.



24" R.O. 28 ½" H x 28 ½" W

Ecotight Shutter Part DRX242WS

6,010 CFM .05 SP
3,580 CFM .20 SP

BESS Labs Test
#25185

36" R.O. 43" H x 43" W

Butterfly Door Part DRX362BB

14,080 CFM .05 SP
11,410 CFM .20 SP

BESS Labs Test
#24338

Ecotight Shutter Part DRX362WS

13,450 CFM .05 SP
11,620 CFM .20 SP

BESS Labs Test
#24337

48" R.O. 54 ¾" H x 54 ¾" W

Ecotight Shutter Part DRX482WS

22,800 CFM .05 SP
18,700 CFM .20 SP

BESS Labs Test
#24339

52" R.O. 54 ¾" H x 54 ¾" W

Butterfly Door Part DRX522BB

31,300 CFM .05 SP
28,500 CFM .20 SP

BESS Labs Test
#25067

Ecotight Shutter Part DRX522WS

32,000 CFM .05 SP
29,200 CFM .20 SP

BESS Labs Test
#25065

57" R.O. 63 ½" H x 63 ½" W

Butterfly Door Part DRX572BB

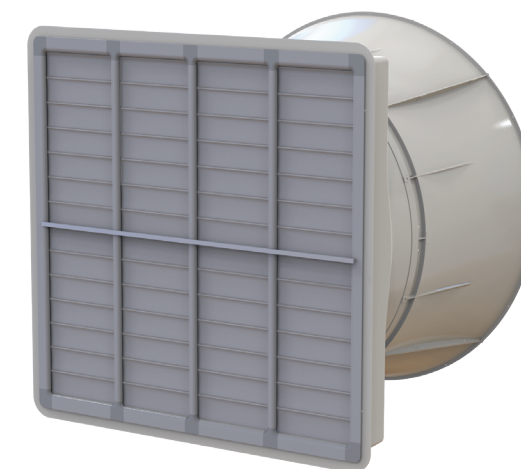
34,100 CFM .05 SP
29,200 CFM .20 SP

BESS Labs Test
#24334

Ecotight Shutter Part DRX572WS

32,900 CFM .05 SP
28,800 CFM .20 SP

BESS Labs Test
#24333



*Available in both white and black SMC Housing.



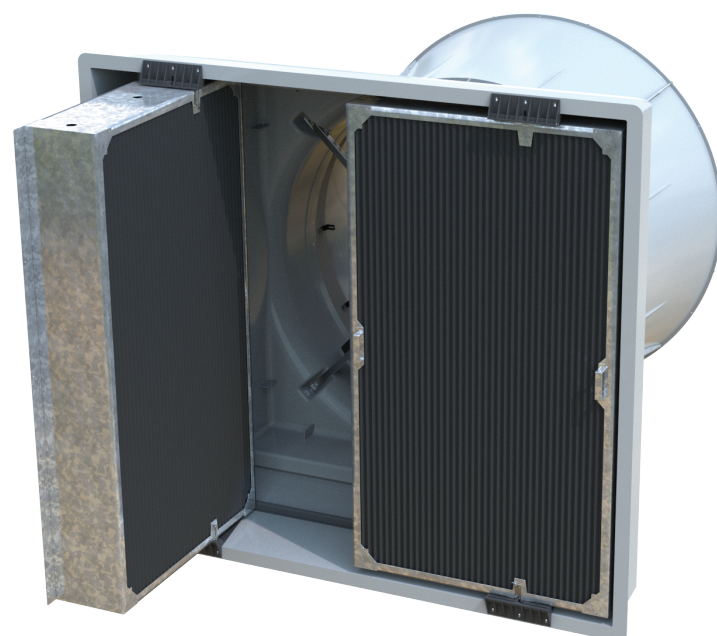
DIRECT X DARKOUT BOX

Light-blocking baffle system allows uninterrupted airflow while preventing sunlight intrusion.

Part # 3121236, 3121252, 3121257

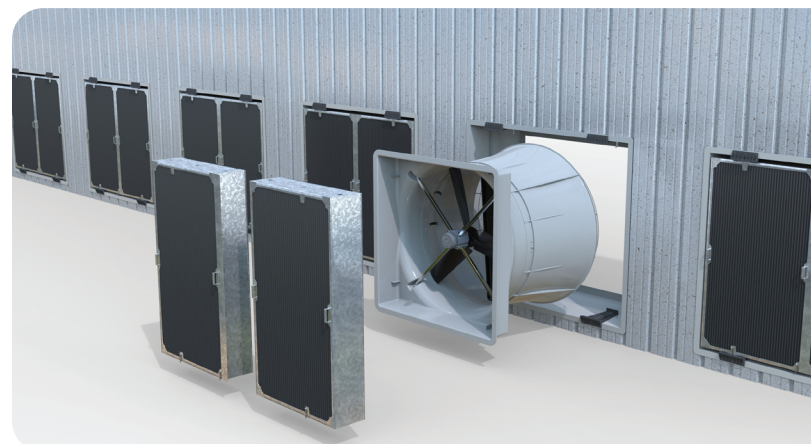
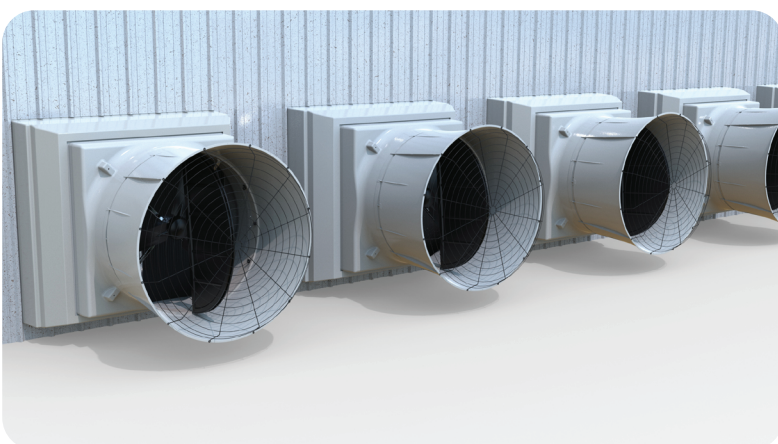
Features

- Fiberglass housing with corrosion resistant box for better longevity
- Available in 11.5" Full Dark or 5.75" Half Dark options
- Flush mounts to wall for better aisle clearance for equipment
- 7'x6' box, for a lower static pressure and higher airflow than competition
- Fits between 8' O.C. framing/ columns
- Available for 36", 52" and 57" fans



Benefits

- Engineered darkout blade/baffle design allows efficient air movement without compromising ventilation rates.
- Offset hinge bracket design allows full door opening in aisles as narrow as 36", preventing clearance issues common with competitor boxes.
- Built for harsh ag environments with materials that resist corrosion, dust, and moisture buildup.

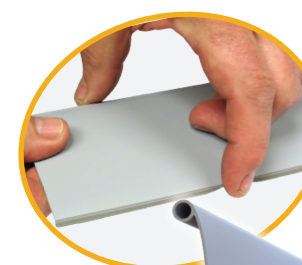


ECOTIGHT SHUTTER

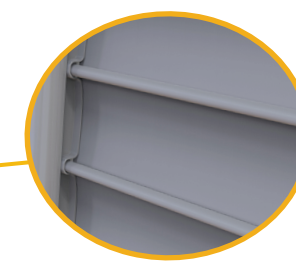
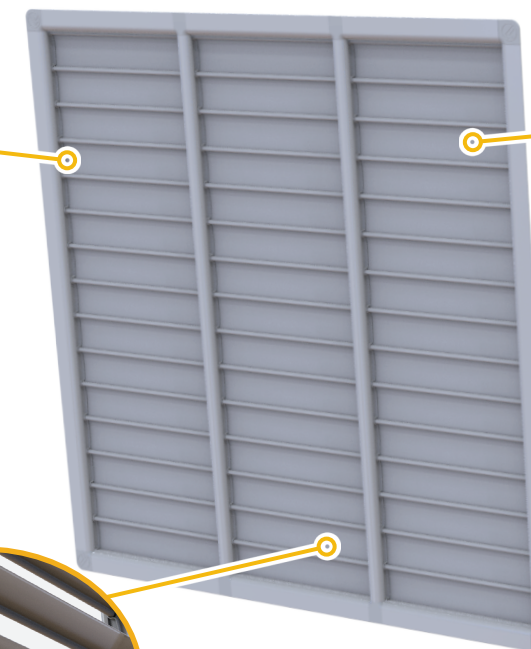


MADE IN USA

Improves Fan Efficiency and Reduces Cold Air Leakage

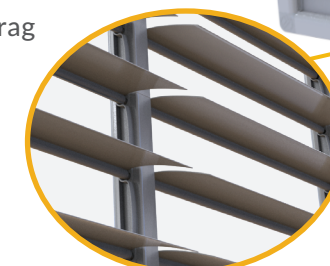


Rubber seal on bottom of blades to ensure a tighter seal

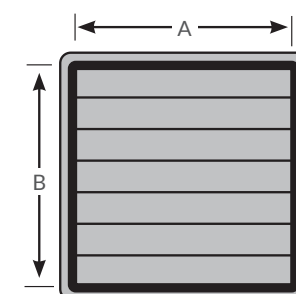


Individual Eco Adapter Blade Clips designed to allow expansion / contraction and reduce air leakage / light

Contoured profiles to create less drag



No flip blade



Measurements are inside of flange to inside of flange.

- Manufactured to your desired custom size
- Heavy-duty, durable twin wall profile frame for longer life and stability of shutter
- Designed for expansion / contraction
- Aerodynamic design for maximum air performance and minimizing air leakage into room
- Built to retro fit any rough opening
- Continuous rod prevents blades from popping out, allowing for a more robust shutter
- Excellent clean-ability with durability to withstand pressure washing
- Allows for higher CFM

**CUSTOM BUILT IN
DYERSVILLE, IOWA!**



SHUTTER ACCESSORIES

Simple and Effective Way to Winterize EcoTight Shutters or Other Manufacturer's Fan Shutters

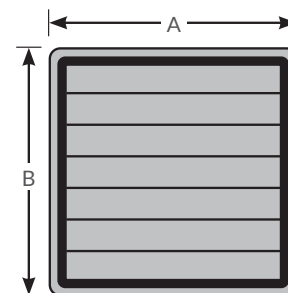


SHUTTER COVER

- Panel stops cold air leakage and shutter flutter
- R-Value = R3 from multiple vanes in panel
- Improves energy usage
- Panel is easy to store and light to handle in summer months
- Flex tip U-Channel pre-installed on panel seals off from any water, dirt or air leakage
- Designed to work with Eco Tight Shutter and other fan shutters on the market
- Designed for expansion and contraction
- Manufactured to your custom sizes available



Shutter Cover
Measurements are
outside of flange to
outside of flange



CHORETIME 52" BUTTERFLY CONVERSION KIT

Shutter Conversion Kit Replaces Butterfly Shutter

Part No. 90520CK

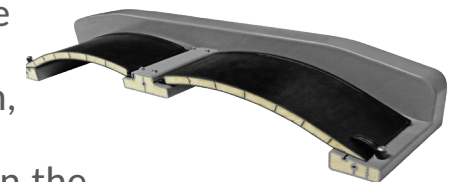
- Shutter conversion kit can eliminate butterfly shutters
- New EcoTight Shutter operates very quietly with minimal noise
- No spring maintenance
- EcoTight Shutter performance is minimally affected by the wind



DL INSULATED INLET SERIES

Most Efficient Air Mixing Inlet on the Market

- Customizable for your operation and can be single or double pulled
- Easily install inlet with all mounting hardware pre-installed to the inlets
- Fully constructed with virgin PVC for durability to withstand power-washing, but are also fully insulated to prevent condensation
- Square design promotes precision air movement during minimum ventilation and allows maximum cfm's to be achieved in full-open position
- Promotes increased velocity of air entering the room, resulting in better air distribution and mixing
- Rough opening designed to fit standard filter boxes in the industry



DL INLET CUTAWAY



DL3232

Part 90302P

Approx. 4,144 cfm @ 0.10 SP
(BESS LAB TEST 18564)
Rough Opening:
28" x 28" (711.2 x 711.2 mm)
Inlet OD: 32" x 33"



DL4727

Part 90301

Approx. 4,628 cfm @ 0.10 SP
(BESS LAB TEST 19572)
Rough Opening:
44" x 24.75" (1,117.6 x 628.7 mm)
Inlet OD: 46" x 27.25"



DL3127

Part 90300

Approx. 3,107 cfm @ 0.10 SP
(BESS LAB TEST 16694)
Rough Opening:
29" x 24.75" (736.6 x 628.7 mm)
Inlet OD: 31" x 27.25"



DL1427

Part 90304

Approx. 1,153 cfm @ 0.10 SP
(BESS LAB TEST 21069)
Rough Opening: 24.75" x 11"

DL1927

Part 90306

Approx. 1,681 cfm @ 0.10 SP
(BESS LAB TEST 21090)
Rough Opening: 24.75" x 16"



WHY USE CEILING INLETS?

Benefits of Ceiling Inlets

- Can be used as a tool to promote drier litter and reduce humidity inside the house by promoting higher ventilation rates without increased fuel usage
- The GC1140 has a fully insulated housing that uses tempered attic air, reducing likelihood of inlets freezing up and condensation
 - During most frigid, cold days of year it is very beneficial to bring tempered attic air into the house that is preheated and has a chance to mix with hot air at the peak of the house minimizing the use of sidewall inlets during cold weather
- Provide optimal air distribution and mixing
 - Bringing air through attic will blend with the hot air near the peak, and will push warm, fresh air down to bird level providing optimal mixing of the air

No ceiling Inlets Used

- When only sidewall inlets are utilized, there are increased instances of freezing / sticking open during cold weather
- Excess condensation on sidewall inlets that is absorbed into the litter
- Bringing in cold air from the sidewall inlets exclusively can result in increased fuel usage



3D Rendering of attic inlet airflow in a poultry house

Attic Air Inlets Beneficial Year Round in Poultry House

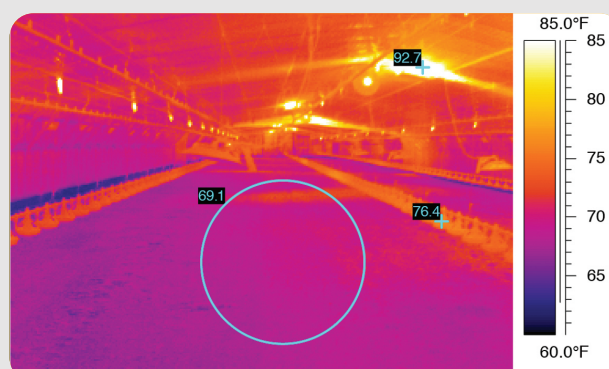


Photo 1 is taken in a 50' x 500' house during springtime when the outside temperature was in the low 60s and with a few inches of fresh, damp shavings. The 93 degree F air coming in through the house's attic inlets raised the house temperature to the mid seventies and the floor temperature to nearly 70 degrees F after only a couple hours of operation. When compared to a house ventilating through side wall inlets, the floor temperatures remained in the low sixties, resulting in little litter drying.

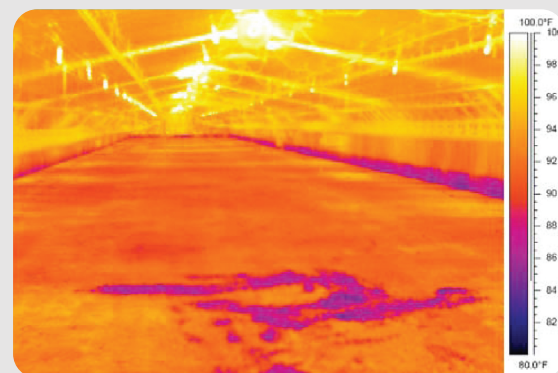


Photo 2 is taken in a 40' x 500' house on a typical summer day with outside temperatures in the mid eighties and with a few inches of fresh, damp shavings. In just a few hours the attic inlets increased the house temperature into the mid-nineties and the floor temperature to about 90 degrees F. The top surface of the fresh litter was beginning to dry. When compared to side wall ventilating, the cool damp litter remained below the surface.

2-WAY FULLY INSULATED INLETS

Great Retrofit for Small Rough Openings



CID2000 GRAVITY

CFM: Approx. 2,000 @ 0.05 SP
Rough Opening: 22.5" x 22.5"

Part 90847
(Gravity)



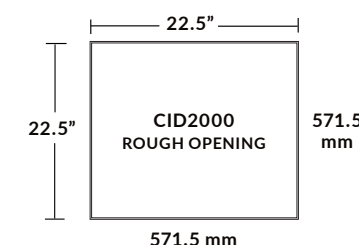
Replaces C2200 Inlets



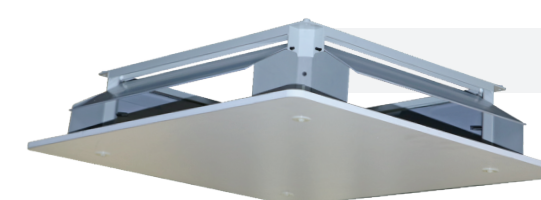
JFD2000 ACTUATED

CFM: Approx. 2,000 @ 0.05 SP
Rough Opening: 22.5" x 22.5"

Part 90847WI
(Actuated)



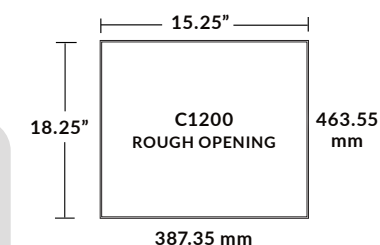
REPLACE OR UPDATE YOUR C1200 INLETS



C1200 GRAVITY

CFM: Approx. 1,200
Rough Opening: 15.25" x 18.25"

Part 90535
(Gravity)



C1200 INLET REPLACEMENT PARTS

- | | |
|------------------|--------------------------------|
| Part No. 90531 | 14.5" Counterbalance with pins |
| Part No. 90532 | 17.5" Counterbalance with pins |
| Part No. 90533 | C1200 Bounce Plate |
| Part No. 90004FR | C1200 Frame Only |



2-WAY INSULATED CEILING INLETS

Withstand Harsh Environments and Cold Weather Conditions



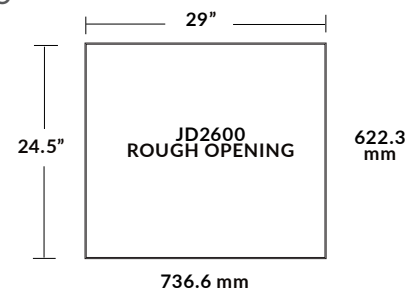
JD2600 ACTUATED OR GRAVITY

13 lbs (5.9 kg)
Approx. 2,400 cfm @ .05 SP

BESS Labs Test #05180
JFD2600 Foam Insulated Also Available

Part 90841
(Gravity)

CFM: 2,490 @ 0.05 SP
Bess Labs Test #05181
Rough Opening: 29" x 24.5"
Inlet OD: 30.50" x 27.00"



Part 90840
(Actuated)

CFM: 2,135 @ 0.05 SP
Bess Labs Test #05097
Rough Opening: 29" x 24.5"
Inlet OD: 30.50" x 27.00"

- Excellently regulates airflow from minimal to maximal levels
- Effectively directs air along the ceiling for proper air mixing
- Constructed from a durable, single-piece, insulated, and corrosion-resistant rotomolded housing
- Minimize condensation, dripping, and inlet freeze-up with 1-inch thick insulated lids
- Frictionless styrofoam PVC-covered lids on a continuous PVC hinge
- Lids effortlessly swing down, allowing the entry of clean attic air into the main room
- When the lids are closed, the inlet securely seals against air leakage
- Showcases resilience in harsh environments and extreme cold weather conditions



JD2900 ACTUATED OR GRAVITY

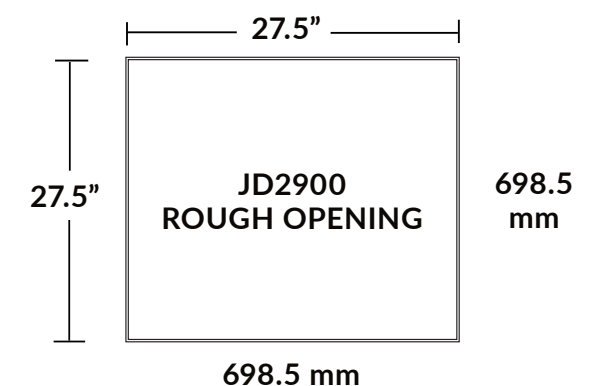
Approx. 2,490 cfm @ .05 static pressure

Rough Opening:
27.5" x 27.5" (698.5 x 698.5 mm)
Also available as single pull inlet

Part 90837
(Actuated)



Part 90836
(Gravity)

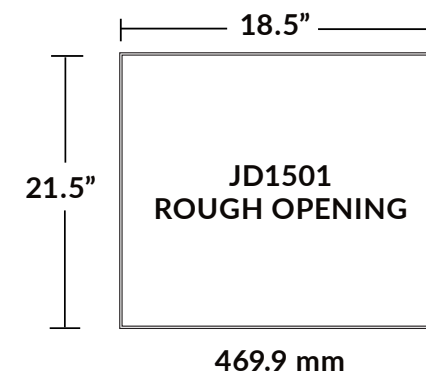


JD1501 ACTUATED OR GRAVITY

Approx. 1,300 cfm @ .05 static pressure

Rough Opening:
18.5" x 21.5" (469.9 x 546.1 mm)
Also available as single pull inlet
BESS Labs Test #05095

Part 90827
(Actuated)



546.1 mm

Part 90825
(Gravity)





RAYDOT INSULATED REPLACEMENT INLETS

Easily Replace Outdated Raydot Inlets

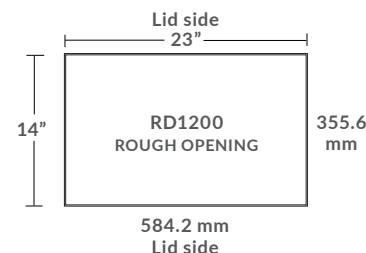


RD1200 & RD2400 ACTUATED

RD1200 ACTUATED

Part No. 90810

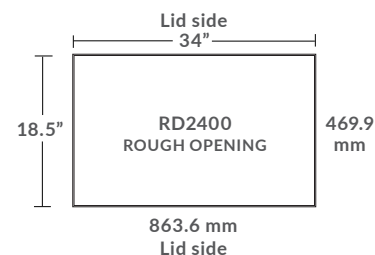
CFM: Approx. 1,200
Rough Opening: 23" x 14"
(BESS LAB TEST 19571)



RD2400 ACTUATED

Part No. 90814

CFM: Approx. 2,400
Rough Opening: 34" x 18.5"
(BESS LAB TEST 19570)



Attic Sleeve
Sold Separately
Attic Sleeve Parts:
RD1200 - 090836BE
RD2400 - 090835BE



RD1200 & RD2400 GRAVITY

RD1200 GRAVITY

Part No. 90809

CFM: Approx. 1,200
Rough Opening: 23" x 14"
(BESS LAB TEST 19571)

RD2400 GRAVITY

Part No. 90813

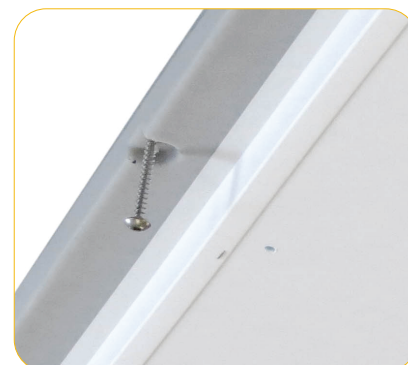
CFM: Approx. 2,400
Rough Opening: 34" x 18.5"
(BESS LAB TEST 19570)



2-stage shut-off to protect from wind pressure



Actuating RD1200 inlet



Inlet lids have tight seal to reduce air leakage



CEILING INLETS



C2200 Ceiling Inlet

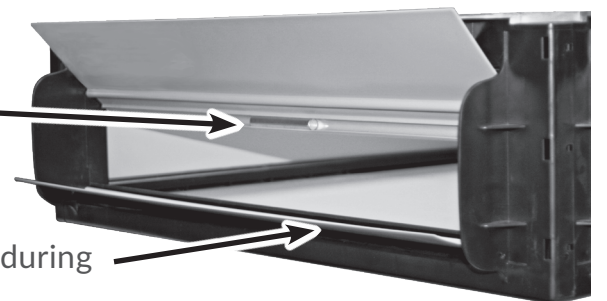
2,089 cfm @ .125 SP
(BESS LAB TEST 08146)

Framed Opening:
22.5" x 22.5" (571.5 x 571.5 mm)

Part 90635

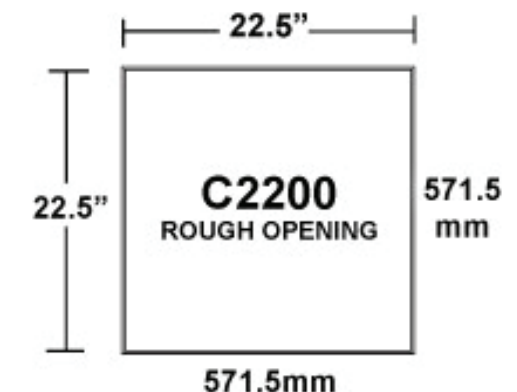
COUNTERBALANCE
COUNTERWEIGHT
allows maximum cfm through inlet

AERODYNAMIC EDGE
prevents blade from being blown back during
pressure washing



Features

- Counterbalance Louvers
- Extra CFM's
- Snaps Together
- Shut-Offs
- Aerodynamic Edge
- Counterbalanced Weights



Benefits

- This system ensures better overall air control throughout the space.
- It installs in just minutes with minimal effort.
- The inlet adjusts automatically based on static pressure.
- Because of its efficiency, fewer inlets are needed per room.
- It reduces worksite waste and improves freight savings.
- It operates automatically using the negative pressure created by an exhaust fan.
- It's built for durability, allowing for easy pressure-wash cleaning, and includes insulation stops for attic applications.



TJ4200 TOPJET CEILING AIR INLET

Engineered to allow higher static pressure in rooms



TJ4200

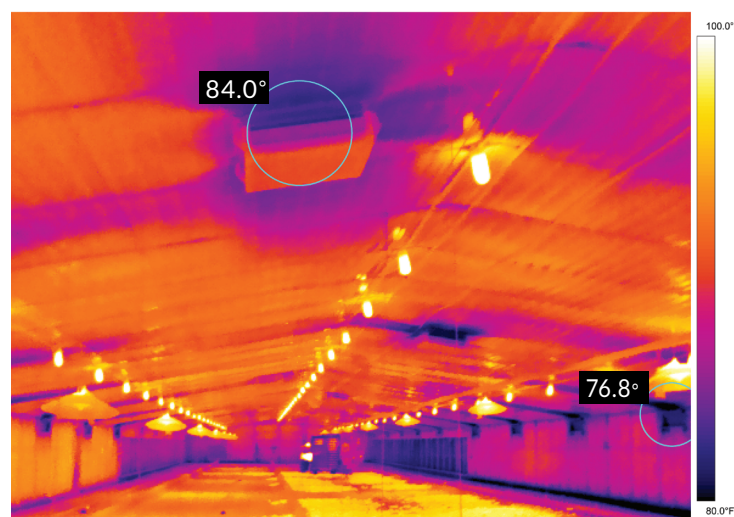
Part 90640

1,591 cfm @ 0.10 SP
BESS Labs Test #02118
Rough Opening: 22.5" x 22.5"
Gravity Inlet Only



MADE IN USA

- 4-Directional louvers direct air along the ceiling and hold air up longer while mixing with room air, distributing air evenly
- Adjustable static pressure by adding washers to each rod
- Minimizes drafty conditions and chilling during brooding
- Engineered to allow more CFM through inlet
- Operates at a higher static pressure
- Creates more uniform house temperatures during minimum ventilation
- Ensures drier litter, lower fuel costs, and lower ammonia concentrations
- Easily assemble with no tools required



360° INSULATED INLETS

360° airflow heavy-duty radius corner design increases fuel savings, air distribution, and air mixing



BESS LAB
TESTED

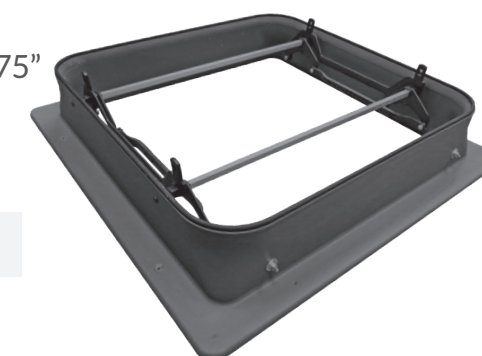
#14005
AND
#14006

GC1140 (Gravity)

Part 90678
1,659 cfm @ 0.10 SP
BESS Labs Test #14005
Rough Opening: 23.75" x 23.75"
Inlet OD: 27.25" x 27.25"

AC3010 (Actuated)

Part 90671
2,050 cfm @ 0.10 SP
BESS Labs Test #14006
Rough Opening: 23.75" x 23.75"
Inlet OD: 27.25" x 27.25"



**RADIUS CORNERS
FOR 360° AIRFLOW
WITH NO DEAD SPOTS**
Air doesn't hit square
corners and deflect
back into inlet

- 360° airflow heavy-duty radius corner design increases fuel savings, air distribution, and air mixing
- Designed for cold climates - fully insulated housing helps reduce heat loss and freeze-up
- Tightest seal on the market - minimal leakage when attic inlet is in the closed position
- Larger bottom board than competition helps direct air along ceiling, resulting in minimal downdraft
- Easy to remove and reattach bottom lid with attachable straps – no bolts or screws to take off
- Housing made of four point pivot reactive injection molding (RIM)





CEILING SIDEWALL INSULATED INLETS

Insulated, aerodynamic, curved louver blade directs fresh air along the ceiling to ceiling peak for maximum air mixing



CSW4612

Part 90560

2,413 cfm @ 0.1 SP
BESS Labs Test #19259
Rough Opening: 46.5" x 12.5"
Inlet OD: 48" x 14.875"

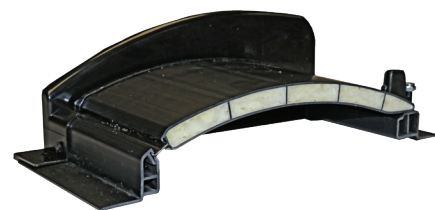


CSW4612 cutaway with insulated foam filled blade and housing

CSW4608

Part 90569

2,549 cfm @ 0.1 SP
BESS Labs Test #19258
Rough Opening: 46.5" x 8.5"
Inlet OD: 49.5625" x 11.1875"



CSW4608 cutaway with insulated foam filled blade

- Aerodynamic, curved louver blade directs fresh air along ceiling to ceiling peak for effective air mixing
- Proven tight seal and design minimizes air leakage resulting in reduced fuel usage
- Fully insulated blade and housing help increase insulation value
- Minimal sweating occurs on inlet in cold climates with full insulation
- All PVC construction that is resistant to corrosion and infestations



DIRECTJET POP DOOR

An effective pop door plays a crucial role in maintaining an optimal climate within your facility. Draft holes within the entry points can significantly impact the overall climate throughout the facility. The DirectJet Pop door offers a reliable solution for managing outlet openings in your facility, ensuring control without any complications.



- Solid airtight closure for house tightness
- Fully insulated to prevent condensation from entering the inside wall
- Bypass wall frame allows to fully seal off opening
- Applicable with automated/manual winching systems
- Various sizes available for best fit
- Prevents determined predators from entry





DIRECTJET SLIDING WALL INLET

Actuated Wall Inlet for Retrofit or New Construction



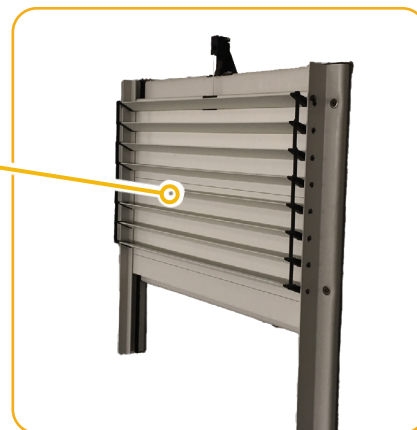
Custom Sizes
Available Contact
our team for Part
Numbers

- Compact design provides improved clearance within the house
- Available in various sizes, ideal for retrofitting existing openings and new construction
- Fully insulated frame enhances R-value and minimizes condensation
- Integrated Bird Wire enhances biosecurity, preventing fowl from entering the inlet system



Optional directional air veins to
throw air in desired patterns

DirectAire Sliding
wall Open



INTERIOR SLIDING WALL INLET

Actuated Wall Inlet for Retrofit or New Construction

4ft. x 24in.

Part 90906CH
6,400 cfm @ 0.1 SP
Rough Opening:
4ft. x 24in.

4ft. x 30in.

Part 90902CH
8,000 cfm @ 0.1 SP
Rough Opening:
4ft. x 30in.

4ft. x 48in.

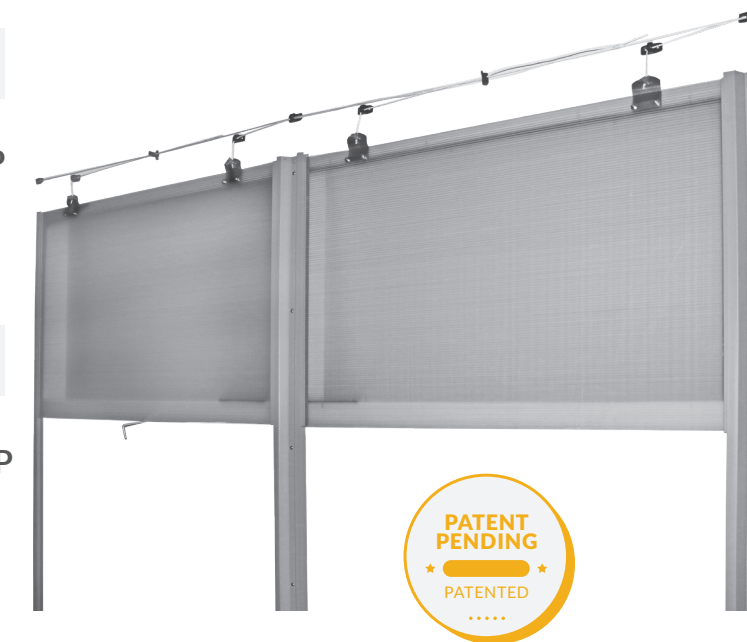
Part 90908CH
12,800 cfm @ 0.1SP
Rough Opening:
4ft. x 48in.

6ft. x 36in.

Part 90900CH
14,400 cfm @ 0.1SP
Rough Opening:
6ft. x 36in.

6ft. x 48in.

Part 90904CH
19,200 cfm @ 0.1SP
Rough Opening:
6ft. x 48in.



- Precision air control and greater air speed to enhance air quality
- R-Value = R3 from multiple vanes in panel
- Plastic construction is corrosion-resistant and power-wash friendly for easy maintenance
- Ridged construction allows for high durability and longevity
- Lightweight panels are easy for handling and installation
- Customizable for many installation configurations
- Great for replacing traditional gravity inlets to increase CFM requirements
- Clear panel allows for light to enter rooms and does not harbor bacteria and dust
- Low maintenance with high dependability

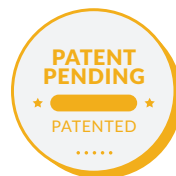
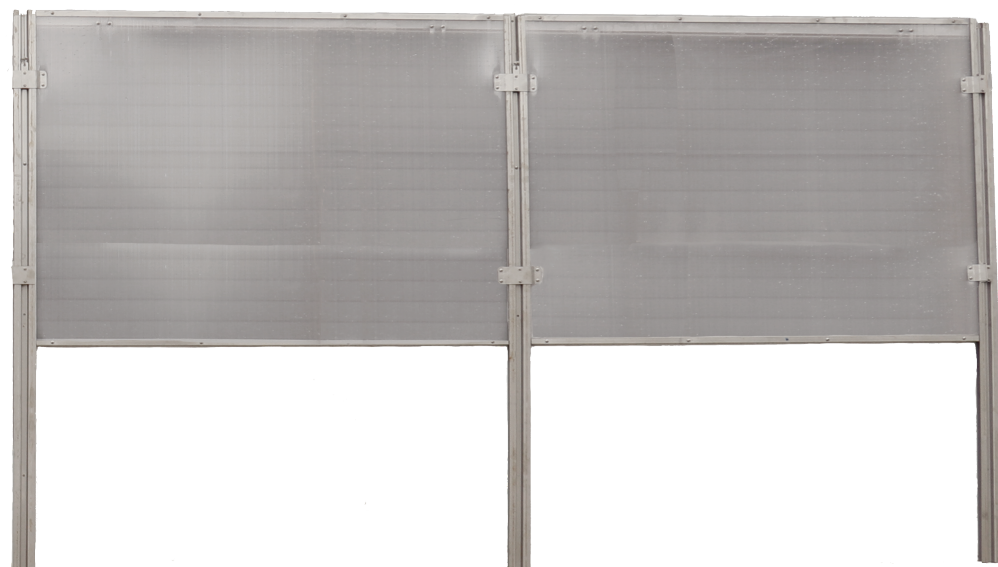


Need more CFMs? Upgrade
counterweighted TJW Inlets to
Actuated Sliding Wall Inlet
(See pg. 38 for more information)



EXTERIOR SLIDING WALL INLET

Actuated Wall Inlet for Retrofit or New Construction



6ft. x 48in.

Part 28001
Rough Opening:
6ft. x 48in.

4ft. x 4ft.

Part 28004
Rough Opening:
4ft. x 4ft.

6ft. x 24in.

Part 28005
Rough Opening:
6ft. x 24in.

4ft. x 6ft.

Part 28007
Rough Opening:
4ft. x 6ft.

- Precision air control and greater air speed to enhance air quality
- R-Value = R3 from multiple vanes in panel
- Plastic construction is corrosion-resistant and power-wash friendly for easy maintenance
- Ridged construction allows for high durability and longevity
- Lightweight panels are easy for handling and installation
- Customizable for many installation configurations
- Great for replacing traditional gravity inlets to increase CFM requirements
- Clear panel allows for light to enter rooms and does not harbor bacteria and dust
- Low maintenance with high dependability
- Aluminum Channels



DIRECTJET CURVED INLET

Our Rack and Pinion driven inlet is engineered for optimal air throw and distribution. Its straightforward design ensures minimal maintenance requirements. The air inlet is equipped with brush seals to eliminate air leakage when closed, ensuring efficient functionality.



- Rack and Pinion Drive operated for positive precise control
- Constructed with corrosion resistant poly exterior
- Engineered as a close cell foam inlet that is non-absorbent to water
- Minimal air leakage with robust seal
- Designed with a curved blade that directs air along the ceiling to mix air at the center of the house
- Creates uniform mixing pattern
- Components are similar to the parts utilized on other Double L rack and pinion drive products
- Easier maintenance with our complete system

Directjet 4113

Part 90576CH

Directjet 4413

Part 90574CH



Front view of inlet



RETROAIRE FLUSH MOUNT INSULATED INLETS

Designed to replace galvanized sidewall inlets



8" RetroAire

Part 90582

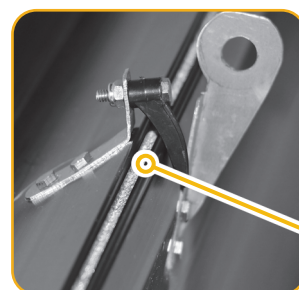
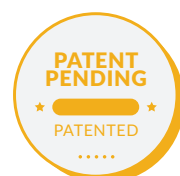
2,108 cfm @ 0.1 SP
BESS Labs Test #23408
Rough Opening: 44.5"L x 8"H
Dimensions: 46" x 10.75"



13" RetroAire

Part 90583

2,876 cfm @ 0.1 SP
BESS Labs Test #23405
Rough Opening: 41.5"L x 11.75"H
Dimensions: 43" x 14.5"



Brush seal provides protection against air and light leakages

- Designed with an aerodynamic, curved louver blade that directs fresh air along ceiling to ceiling peak for effective air mixing
- Great replacement for galvanized doors
- Built with fully insulated PVC that is rodent and beetle resistant
- Eliminates wet litter by preventing air leakage and condensation build up
- Delivers more air (cfm) than conventional metal inlets and reduces inlets needed
- Features a flush mount that is fully sealed against air leakage and light
- Directs airflow through inlet's opening rather than leaking out bottom and sides of inlet
- Engineered with continuous hinge that helps reduce drafts on birds and saves on heating costs; improves bird health



CUSTOM WALL INLETS

The perfect solution for your retro-fit project.



Custom 8" RetroAire

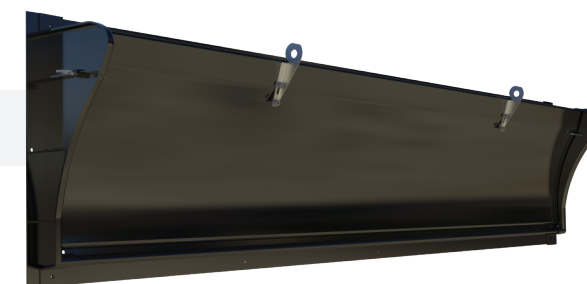
Part 90587

Inlet OD Width: RO Width +1.5"
Inlet OD Height: 10.75"

Custom 13" RetroAire

Part 90588

Inlet OD Width: RO Width +1.5"
Inlet OD Height: 14.50"



(See pg. 24 for more information)

Custom 8" CSW

Part 90577

Inlet OD Width: RO Width +1.75"
Inlet OD Height: 11.25"

- Easy installation as custom sizes can be ordered to fit existing or new rough openings
- Constructed with flush mount framing to easily through opening
- Aerodynamic curved blade design allows for efficient air mixing
- Built in insulation and continuous hinge reduces condensation & freezing
- Plastic construction is beetle resistant
- Reduces bird drafting and wet litter



DIRECTAIRE INSULATED INLETS

Aerodynamic, curved louver blade directs fresh air along ceiling for effective air mixing



DirectAire 4408

Part 90553CH

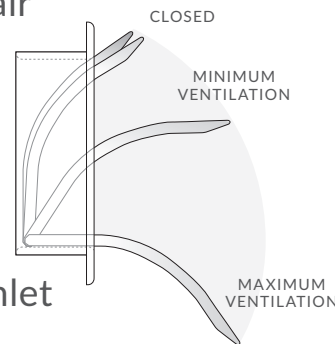
1,669 cfm @ 0.1 SP
BESS Labs Test #14334
Rough Opening: 44.5"L x 8.25"H
Inlet OD: 48" x 11.25"



DirectAire 4108

Part 90557CH

1,555 cfm @ 0.1 SP
Rough Opening: 41.5"L x 8.25"H
Inlet OD: 44.25" x 11.25"



- Aerodynamic, curved louver blade directs fresh air along ceiling to ceiling peak for effective air mixing and speeds air to the center of even wider poultry mega houses
- Totally sealed PVC construction prevents darkling beetles from deteriorating inlet
- Delivers more air (cfm) than conventional metal inlets and reduces inlets needed
- During operation, airflow is directed through the inlet's opening rather than leaking out the bottom and sides of inlet
- Effectively pulls warm air from sidewalls 3 feet away and mixes warm air with fresh incoming air

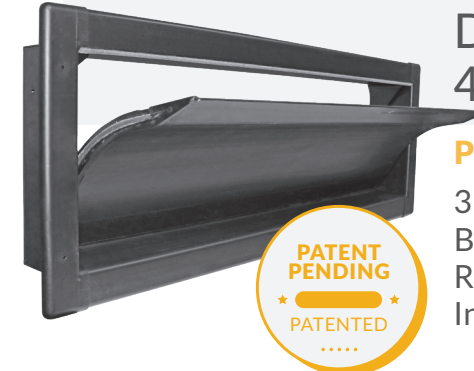


DO NOT STORE BOXES OR INLETS OUTSIDE OR IN DIRECT SUNLIGHT. IF INSTRUCTIONS ARE NOT FOLLOWED, WARRANTY WILL BE VOID.



DELUXE DIRECTAIRE INSULATED INLETS

Fully insulated sidewall inlet that is rodent and beetle resistant – no exposed insulation



Deluxe DirectAire 4413

Part 90570CH

3,266 cfm @ 0.1 SP
BESS Labs Test #19260
Rough Opening: 44.5"L x 13.5"H
Inlet OD: 47.25" x 16.875"

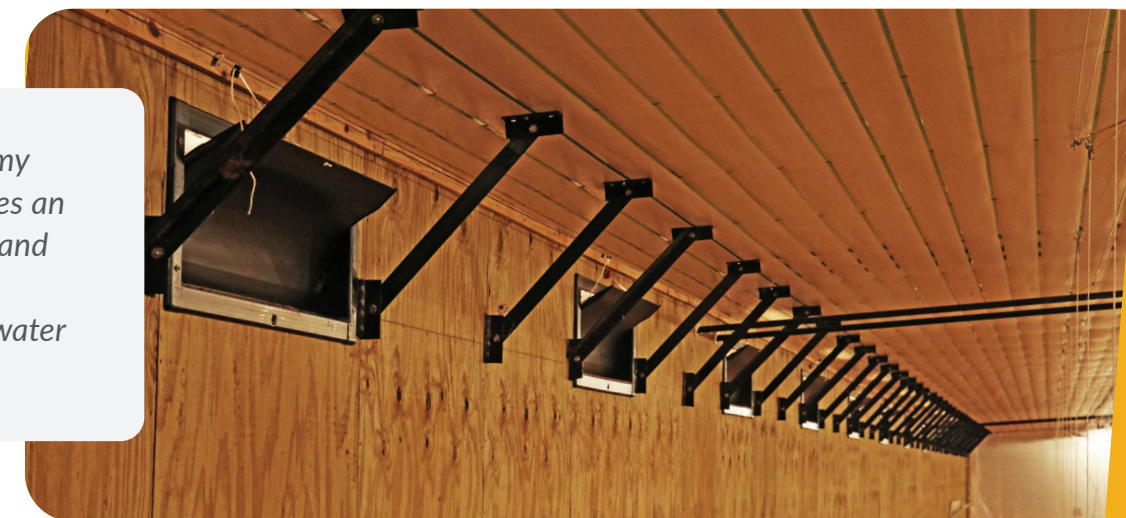
Deluxe DirectAire 4113

Part 90572CH

3,050 cfm @ 0.1 SP
Rough Opening: 41.5"L x 13.5"H
Inlet OD: 44.50" x 16.875"

- Aerodynamic, curved louver blade and housing directs fresh air along ceiling to ceiling peak for effective air mixing in the center of housing
- Delivers more air (cfm) than conventional metal inlets and reduces inlets needed
- Easily snaps together for ease of installation and cheaper freight; easy to clean and adjust
- Reduces or eliminates bird drafting and saving on heating costs; improves bird performance
- Fully sealed against air leakage and light
- Designed with fully insulated PVC that is rodent and beetle resistant – no exposed insulation
- Directs airflow through inlet's opening rather than leaking out bottom and sides of inlet

"Installed these inlets in my two 66' wide houses. Gives an excellent airflow pattern, and the new insulated design minimizes sweating and water buildup."



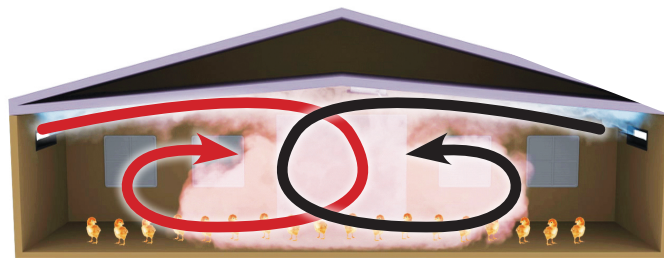
DO NOT STORE BOXES OR INLETS OUTSIDE OR IN DIRECT SUNLIGHT. IF INSTRUCTIONS ARE NOT FOLLOWED, WARRANTY WILL BE VOID.



WHY RECESSED VS. GALVANIZED?

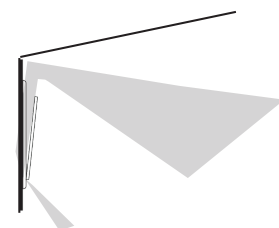
Some sidewall inlets are better at directing air across the ceiling than others

Recessed Wall Inlets Double L DirectAire Inlets



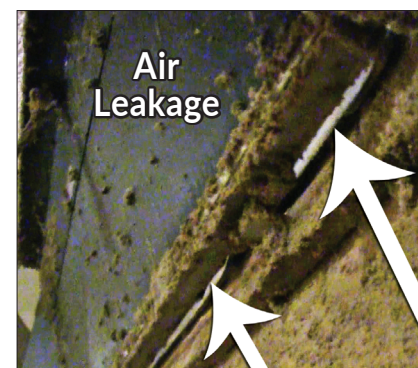
- A high quality inlet makes more sense since majority of the fresh air should enter through the inlets
- The inlet door is recessed into the wall, which prevents air from exiting the sides of the inlet
- Effectively pulls warm air from sidewalls 3 feet away and mixes warm air with fresh incoming air, directing mixed tempered air along ceiling to peak of house
- Can be used to increase air movement across floor
- Tend to be better insulated and constructed than traditional galvanized inlets with fresh incoming air

Galvanized Wall Inlets (Surface Mount) Competition Inlets



Instead of shooting the air to the center of the building, air hits the ceiling and bounces down to the floor - chilling the birds

- Leakage at the bottom of the flush mount sidewall inlet
- Sweating / inlet hinge rusting
- Side air leaks let cold air drop without mixing with the warm air in the house
- These weaknesses can prove costly, especially in modern totally enclosed houses constructed than traditional galvanized inlets with fresh incoming air



Air Leakage

Air leakage also creates very cold side walls

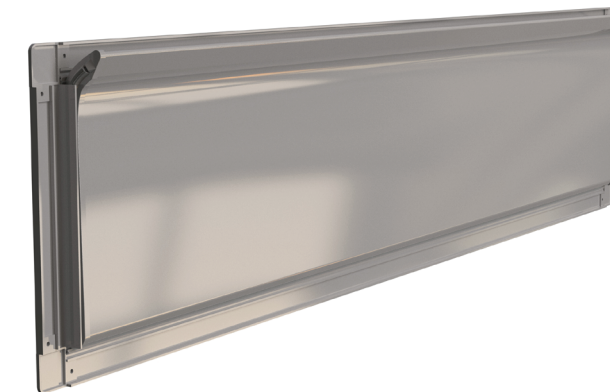


GALVX INLET

The perfect solution for your retro-fit project.



Part 62000



Features

- Plastic Frame
- European Curved Blade Design
- Brush Seal
- Fully Insulated Blade
- UV Protected
- Continuous Hinge
- Designed to cover 7"-9" tall openings and widths of 48" or smaller

Benefits

- Designed to fully seal against air leakage and light.
- Designed to direct fresh air along ceiling-to-ceiling peak for effective air mixing.
- Reduces drafts and saves on heating costs.
- Built to be rodent and beetle resistant.
- Improves wet litter by preventing air leakage and condensation build up.
- Will not require wind/sun deflector.
- Directs airflow through inlet's opening rather than leaking out bottom and sides of inlet.
- Versatile to cover multiple different opening sizes.
- Easy to install.



CLEAR INLET

Eliminates the need to frame in separate windows by replacing older galvanized inlets with Clear Inlets.



Part 28100

- Transparent Design
- Allows natural light in, can be used as an alternative to a window to avoid having to frame in new windows
- Available in a range of sizes to fit different facility needs
- Constructed from high-quality, corrosion-resistant materials for long-lasting performance
- Features a design that minimizes dirt accumulation and simplifies cleaning
- Easily adapts to various facility layouts and needs, thanks to customizable sizes
- Reduces the need for frequent replacements, saving time and money over the long term

USES:

- Ideal for retrofitting older facilities without compromising structural integrity.
- Perfect for growers looking to improve ventilation and natural lighting without extensive renovations.



TOPJET WALL INLETS

Most efficient counterweight wall inlet on market with minimal expense - used worldwide.



TJP 1255

Part 90740

Opens at 0.055 static pressure
Rough Opening: 22" x 6.5"
434 cfm @ 0.125 SP
BESS Labs Test #23287

TJP 1265

Part 90741

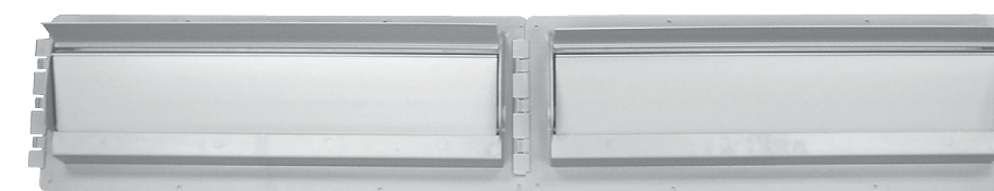
Opens at 0.065 static pressure
Rough Opening: 22" x 6.5"



MADE IN USA



- Designed with counterbalance louvers that opens from the top instead of the bottom, directing air to the center peak of poultry house with no open ends or bottom leakage
- Counterbalance design can be made with the different weights to open at different static pressures of 0.55 and 0.65
- Built with durable PVC construction for long life - no corrosion or deterioration
- Eliminates curtain, baffle pulley and cable management required with traditional winter inlet systems
- Use of wind deflector is suggested



EASILY SNAP TOGETHER TWO TJP1255 INLETS



Part 90715

WD48 WIND DEFLECTOR
For use with two TJP1255 Inlets



TOPJET GRAVITY WALL INLETS

Translucent Inlets Direct Airflow Towards the Ceiling



- Translucent counterbalance louver blades allow more natural light into the room
- Adjustable counterweight for balancing multiple inlets, with ability to adjust for lower / higher static pressure
- TJW louvers open from the top instead of the bottom and are designed to direct airflow towards the ceiling area
- Engineered to open at .05 to .07 static pressure

Part 90519CH



Part 90540CH

Part 90521CH

TJW4312

Part 90519CH

13 lbs (5.9 kg)
2,200 cfm @ .125 SP
Framed Opening:
43.75" x 12.5" or
1,111.3 x 317.5 mm

TJW2923

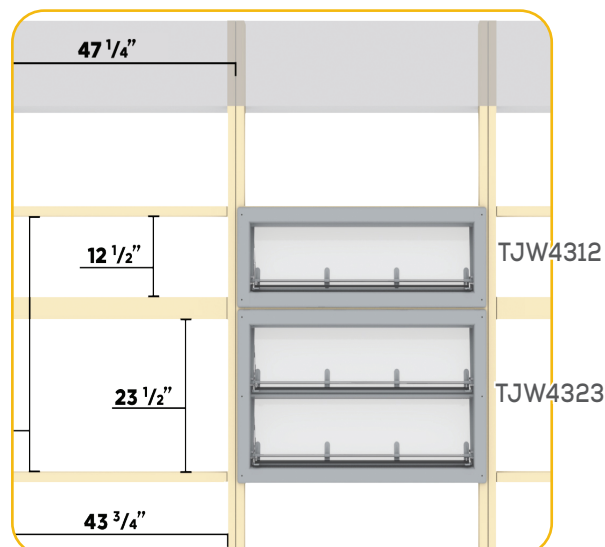
Part 90540CH

18 lbs (8.2 kg)
3,000 cfm @ .125 SP
Framed Opening:
29.75" x 23.5" or
755.7 x 596.9 mm

TJW4323

Part 90521CH

24 lbs (10.9 kg)
4,400 cfm @ .125 SP
Framed Opening:
43.75" x 23.5" or
1,111.3 x 596.9 mm



JWI WALL INLETS

Designed to Excel in Colder Weather



JWI-1200

Part 90812

Approx. 1,000 cfm @ 0.05 SP
Framed Opening:
22" x 14" (558.8 x 355.6 mm)

JWI-2400

Part 90824

Approx. 2,400 cfm @ 0.05 SP
Framed Opening:
45.5" x 14" (1,155.7 x 355.6 mm)

- Adjustable counterweight allows for fine control of air movement
- Negative pressure pulls back a frictionless styrofoam baffle to provide direct access of fresh air into your building
- Insulated hinged cover can be closed tight in cold temperatures or adjusted to any degree for proper air distribution
- Opens wide when plenty of air is needed; flow adjusts automatically to protect animals during cooler periods

W400 GRAVITY WALL AIR INLET

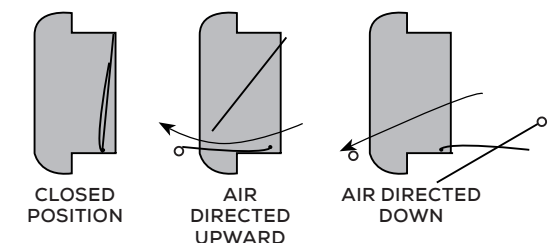
VERSATILE ALL-SEASON INLET



Part 90499

1.6 lbs (0.73 kg)
490 cfm @ .125 SP

Rough Opening:
22.25" x 5.5" (565.2 x 139.7 mm)



Offers air direction control through the use of its bottom deflector louver. The W400 can be mounted to control airflow through a wall by framing in an opening. The W400 inlet has a bottom deflector louver that is used to direct airflow and, if desired, to shut off the inlet.





WEATHERHOOD

Durable construction with optionality to fit your markets needs.



4413 Weatherhood

Part # 784620

- Dimensions: 52" L x 27.5" W x 18.75" D
- Approx. Weight: 11lbs
- Material: Plastic

4413 Weatherhood with Darkout

Part # 784620D

- Dimensions: 52" L x 27.5" W x 18.75" D
- Approx. Weight: 14lbs
- Material: Plastic

Features:

- Plastic Construction for Durability
- Minimal Air Restriction
- Restricts Rain, Wind, & Sun Access
- Available with or without Darkout

Benefits:

- UV protected from sun rays and will not brittle overtime.
- Oversized for limited air reduction
- Closed top for better protection from inclement weather.
- Installs to standard framing and studs.
- Pairs with pre-assembled darkout for easy installation.



Weatherhood on Broiler House



DEFLECTORS FOR SIDEWALL INLETS

Proven to be the most efficient poultry hood on the market. Designed for minimal air restriction.



Deluxe DirectAire

Part 90555C

4413 / 4113 Inlet Size
48"L x 18.75"H x 12"D



DirectAire

Part 90555WDC

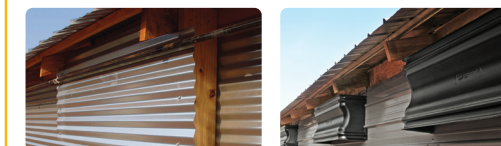
4408 / 4108 Inlet Size
48"L x 13.25"H x 8"D

- Plastic Construction for Durability
- Restricts Rain, Wind & Sun Access
- UV protected from sun rays and will not brittle over time
- Designed for minimal air restriction and only restricts the air 13.03% when the inlet is fully open (BESS Labs Test No. 17551)
- Brings in more air at a higher velocity than wood alternative
- Leads to drier litter moisture content over an extended period of time.
- Light Reflection is reduced by texturing on the hood

"I love this new hood design! It protects my inlets from the sun and the wind, and I've found my sidewall inlets operate more efficiently than my other houses with the wood and tin design."



WARNING!



WIND DEFLECTOR NEEDS TO BE INSTALLED TO PROTECT INLETS FROM DIRECT SUNLIGHT

WARRANTY VOID IF WIND DEFLECTOR IS NOT USED ON DIRECTAIRE INLETS



ECODRIVE WINCH SYSTEMS

Delivering Optimal Power for Ventilation Systems

- Flexible installation
- Multiple inlets can be controlled at the same time
- Low-maintenance and low-noise
- Perfect Price/Performance Ratio
- Compact and Smart Design
- Includes emergency limits



EcoDrive 300

Available in Belt Drive or Pipe Drive.
Contact for Part Number.

Torque	300 Nm
Belt Speed	28 in./min.
Pulls	1 Belt = 809 lbs/belt 2 Belts = 1050 lbs/belt or 2100

total Voltage:	0.35 HP 120V 1 Phase 60hz 0.35 HP 240V 1 Phase 60hz 0.35 HP 240V 3 Phase 60hz 0.35 HP 480V 3 Phase 60hz
Available for Pipe or Belt Drive Applications	



EcoDrive 90

Part 17002

Torque	90 Nm
Belt Speed	6 in./min.
Pulls	1 Belt = 750 lbs/belt 2 Belts = 386 lbs/belt or 772 total
Voltage	24 DC



24" STROKE LINEAR ACTUATOR

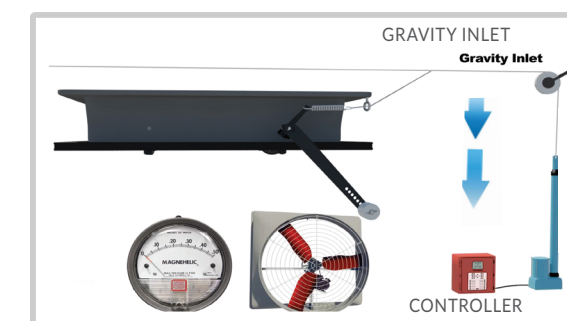
With adjustable mounting bracket



HA24-24"

Part 90880

Power Rating: 110V 50/60hz 1.0 Amps
Stroke: 24" / 610 mm
Max Speed: 5.3 mm / sec
Max Self-Locking: Approx. 772 lbs / 350 kg
Max Load: Approx. 772 lbs / 350 kg



WORKS GREAT WITH GC1140 ATTIC INLETS

- High limit safety switch
- Smooth, quiet operation
- Mounting hardware included
- Great for even harsh environments
- Totally enclosed - protected from oxidation
- Duty Cycle: Max 20%, 12 min / hr
- Heavy-duty high precision sealed 10 km feedback potentiometer



NEW
PRODUCT

ECOTIGHT ENDWALL RACK & PINION

The EcoTight EndWall Rack & Pinion system is designed to optimize tunnel ventilation systems. It is a closed cell insulated foam tunnel door with custom lengths and stacking available.



Custom Sizes
Available. Contact
for Part Number

Door Thickness: 1- 3/8"
Curved or Straight Rack
Color Options:

- White Paneling
- Grey Paneling

 Available Door Sizes of 24"-60"

- Actuates multiple rows with one winch
- Provides maximum sealing to reduce cold-air leakage
- Eliminates freezing issues
- Efficient design that minimizes the number of actuators
- Positive attachment to the tunnel doors
- Built to custom-sized vents to maximize intake openings
- Continuously hinged door
- Durably engineered with thick schedule 40 tubing
- Allows for smooth continuous control of vent systems
- Closed cell foam filled with vertical and slanted supports providing rigidity



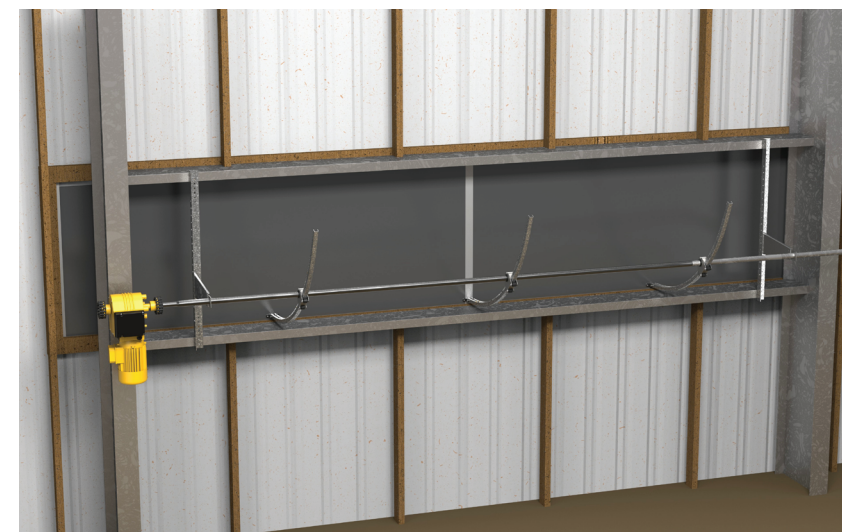
Heavy Duty
Actuating System



NEW
PRODUCT

ECOTIGHT SIDEWALL RACK & PINION

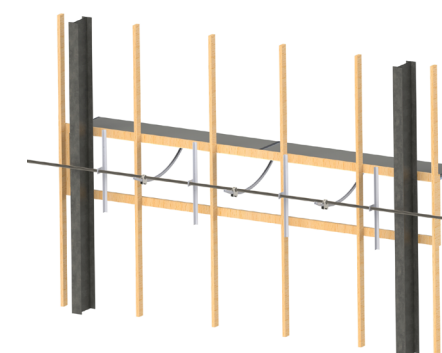
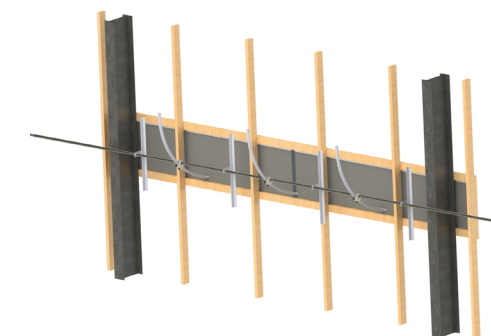
The EcoTight SideWall Rack & Pinion system is designed to optimize Cross Ventilation designed systems. It is a closed cell insulated foam, PVC tunnel door that is supported with galvanized tube steel parts. Custom lengths are available.



Custom Sizes Available.
Contact for Part
Number

Door Thickness: 1- 3/8"
Curved or Straight Rack
Color: Grey Paneling
Available Door Sizes of 24"-60"

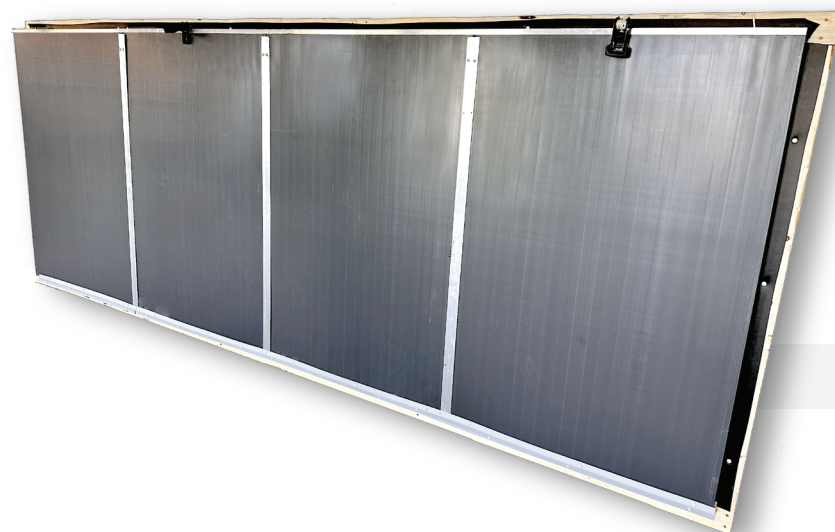
- Efficient design that minimizes the number of actuators
- Positive control to the tunnel doors
- Built to custom sized vents to maximize intake openings
- Hi-profile gaskets for an optimum seal
- Eliminates freezing issues.
- Closed cell foam filled with vertical and slanted supports providing rigidity
- Operated with a heavy duty rack and pinion system





ECOTIGHT TUNNEL DOOR

The EcoTight Tunnel Door is designed for ease of operation and installation. It combines that with the best hinge and seal on the market for optimal performance in both cold and warm weather.



5' Tunnel Door

Part 31102W

Door Dimension: 39.3" x 60"
Door Thickness: 1- 3/8"

4' Tunnel Door

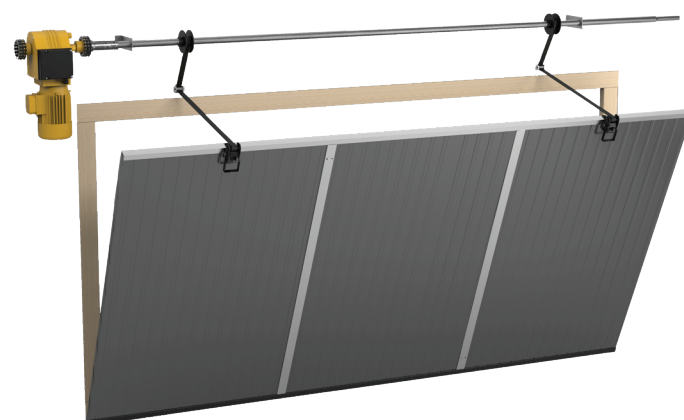
Part 31101W

Door Dimension: 39.3" x 48"
Door Thickness: 1- 3/8"

- R-10 Insulation Value for increased energy efficiency and cost savings
- Easy and fast installation
- Custom Sizes Available
- Unique plastic design is more durable than metal
- Continuous hinge provides maximum sealing to reduce cold-air leakage
- Ratchet Strap design provides effortless tunnel door adjustments
- Easier to handle with its smaller door design

Now Available
Pipe Driven
EcoTight Tunnel Door

Pipe Drive Kit Part No 31104



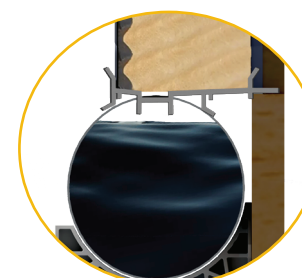
DIRECTAIRE COOL CELL SYSTEM

The DirectAire Cool Cell system is our corrosion resistant system for cooling to provide longevity, efficiency, and easy maintenance for the grower to utilize in their house.

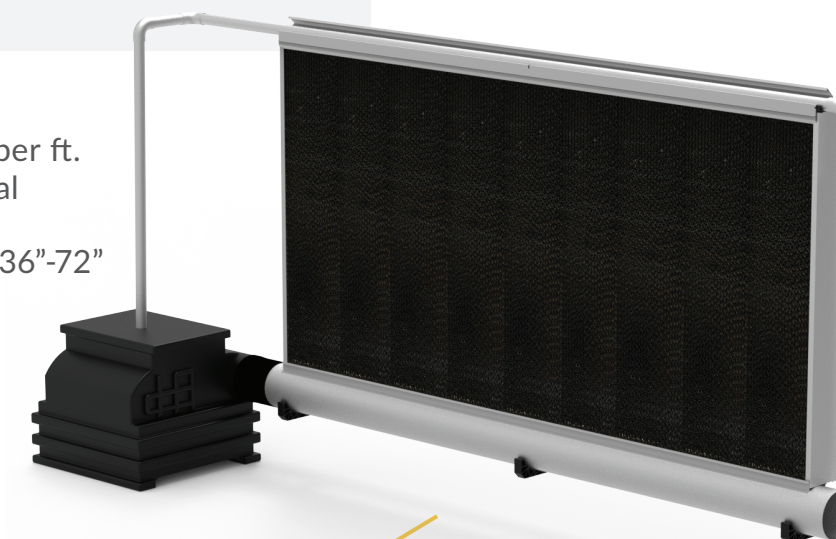
DirectAire Cool Cell

Part 31150

Internal Water Capacity: 2.6 gal per ft.
Black Poly Tank Capacity: 63.7 gal
Pad Thickness: 6"
Pad Height: Size varies between 36"-72"



Extend pad life:
designed
to keep the pad from
sitting in water



- Unique trough design allows 20% increase in water capacity than other systems
- Durable, UV resistant, plastic design that is corrosion resistant
- Open-top design allows for visual inspection of water jets and easy access for cleaning
- Features less components for quick and easy installation
- Multiple layouts to fit your specific needs



EVAPORATIVE COOLING PADS

The DirectAir Cooling pad is a meticulously crafted cooling solution with its efficiency and durability. Tailored for livestock facilities, its design ensures optimal cooling, promising years of dependable service.



DirectAir Cooling Pad

Part 31163

Dimension: 36" H x 12" W x 6" D

Part 31164

Dimension: 48" H x 12" W x 6" D

Part 31160

Dimension: 60" H x 12" W x 6" D

Part 31161

Dimension: 72" H x 12" W x 6" D

Part 31162

Dimension: 84" H x 12" W x 6" D

- Unique structure provides a larger evaporation surface aiding in an outstanding cooling efficiency
- High face velocity enables air to pass through the pad without water droplet carryover
- Specially treated for corrosion resistance, mildew resistance and high structural strength to have a long service life
- Low pressure drop ensures that high-velocity air moves through the pad with minimal resistance
- Self-cleaning design, thanks to the steeper angle of the unequal flute design, flushes dirt and debris from the pad's surface



DIRECTAIRE COOLING PAD DESIGN

Proven and tested quality with 15+ years of being on the market.



Design Aspects

Water Distribution

Water flow rates fluctuate depending on the pad's depth. For effective cooling, the pads require a water supply of 1.5 gallons per minute per square foot of the horizontal (top) pad surface area. In cases of heightened evaporation or pad walls exceeding 72 inches in height, an extra 10-20% of water might be necessary for optimal performance.

Application

Call Double L for help in determining the requirements for specific installations. Cooling pads may be cut to fit smaller applications.

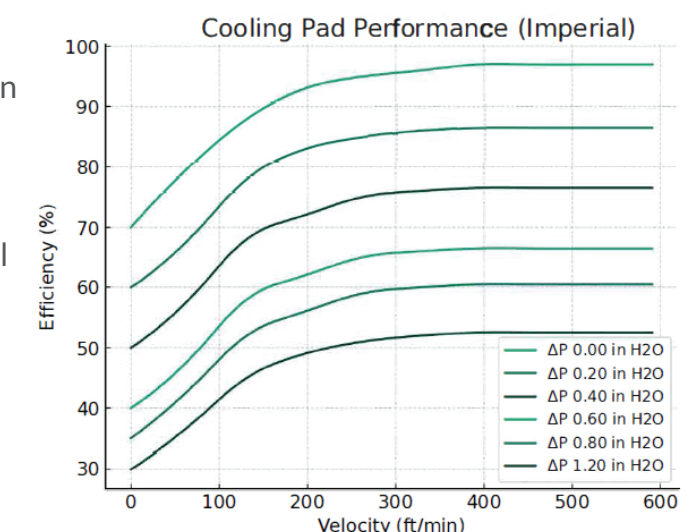
Supply

It is essential to appropriately size the gutter and sump to ensure an adequate water supply for the system to function at its maximum capacity without overflowing during shutdown. Typically, water storage equivalent to 10% of the pad's volume is satisfactory. The DirectAir Cool Cell we provide includes additional storage space to reduce wastage.

Maintenance

Micale: To minimize mineral deposits maintain a continuous water bleed off or periodically dump the sump.

Algae: If algae is allowed to grow freely it will eventually clog the flutes. This will diminish the air flow and increase static pressure and reduce the pad efficiency. Do NOT use chlorine or bromine on the cooling pads.





4872 WELCOME MAT

Reduce Pig Stress, Keep Pigs Dry, and Help Prevent Feed Waste



4' x 6' WEAN-TO-FINISH PIG MAT

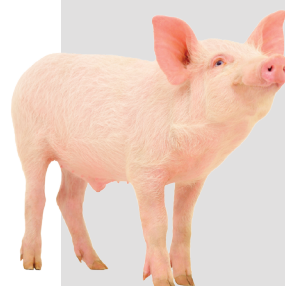
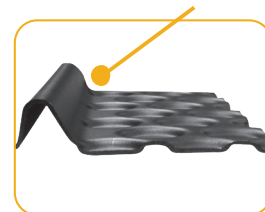
Part No. 16459

Dimensions 4' x 6' (1.2 x 1.8 m)
Thickness 0.115" (2.9 mm)

GREAT FOR CREEP FEEDING AND REDUCING FEED WASTE

- Accommodates 50 pigs
- Improves pig's comfort, environment, health, and productivity by keeping nursery pigs warm and dry while avoiding diseases.
- Unique design allows nursery pig to lay on elevated surface, helping to insulate little pigs from cold weather draft and the cold concrete slats.
- Easily pressure washed clean for increased bio security.
- Simple to transport and store on a shelf or wall.
- Reduces feed waste with deep oval indentations and a raised feed lip

1-1/4" RAISED
FEED LIP



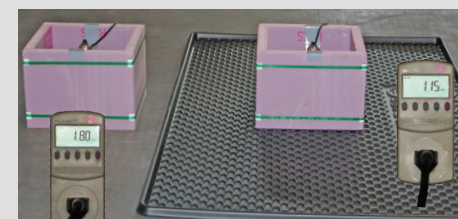
PIG MAT SAVES 36% OF PIG'S HEAT LOSS

Thermal Comfort for Little Pigs in Cold Wean-to-Finish Barn

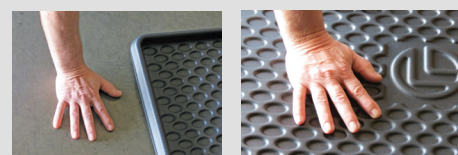
Tests conducted by Double L show that producers using the 4' x 6' Wean-to-Finish Pig Welcome Mat can use 36% less energy to maintain the pig's body temperature (105°F) versus a pig lying on a concrete floor.

Two boxes, 12" x 12" x 12" high, were made using 1 1/2" thick insulation board, leaving the top and bottom of the box open. Lined with 3 mil plastic and filled with water, two identical heating probes were used to heat the water to 105°F. One box was placed on a concrete floor and the other box was placed on the 4' x 6' Welcome Mat on a concrete floor. When temperature of water reached 105°F, the usage of kilowatts to maintain temperature in two boxes was documented during the winter months.

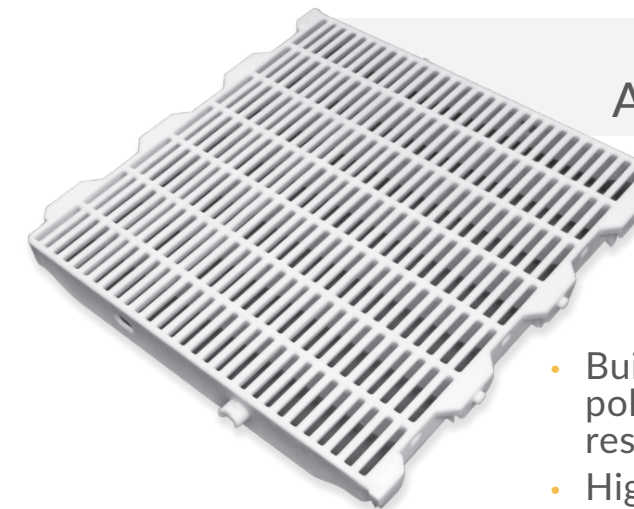
In a 17-hour span, the box on the plastic mat used 1.15 Kwh while box directly on the concrete used 1.8 Kwh. Results showed that a pig lying on the 4' x 6' Wean-to-Finish Mat used 36% less energy to maintain its body temperature (105°F) when compared to a pig lying on the concrete floor.



CONCRETE FLOOR VS. WARM, DRY PIG MAT



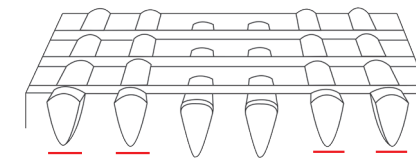
ADVANTAGE NURSERY



FILTER-EEZE® 24" x 24" ADVANTAGE NURSERY FLOOR

Part No. 13120

Dimensions 24" x 24" (610 x 610 mm)
Openings: 7/16"



HIGH / LOW RIB DESIGN

- Built with heavy-duty rugged virgin polypropylene slat that has excellent impact resistance
- High / low superior traction bars and reinforced deep cross ribs enhance slat strength
- Warm surface does not rob little pigs of their body heat and reduces chilling and stress on your pigs
- Solid plastic construction is rust /corrosion proof and resists bacteria build-up, shedding waste easily
- Cleaning beam supports is more efficient with its 1/4" gap around perimeter
- Reversible design easily snaps together for fast, easy assembly

EXCELERATOR NURSERY



FILTER-EEZE® 24" x 24" EXCELERATOR NURSERY FLOOR

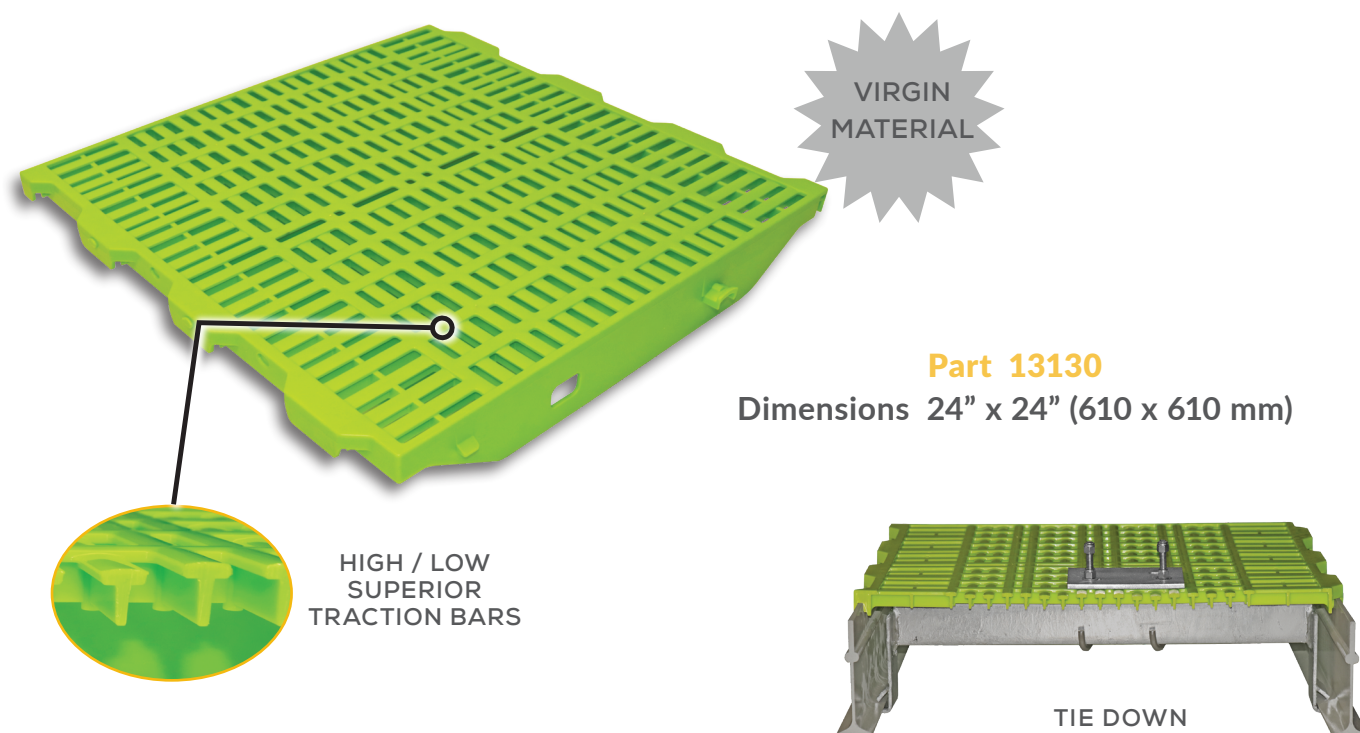
Part No. 13125

Dimensions 24" x 24" (610 x 610 mm)



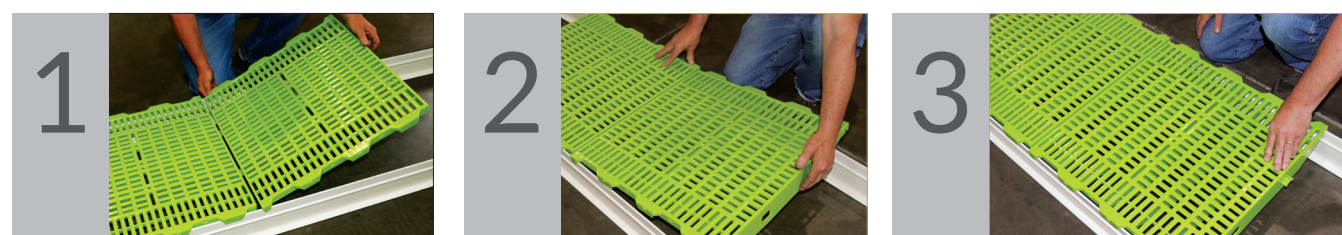
PREMIER NURSERY FLOOR

Bright lime green color for easy scour detection and cleaning of flooring.



- 7/16" openings and crowned tops for optimal manure filtration
- Design reduces cost & quantity of beam/ flooring
- Easily pressure wash clean with prime gap locations
- Rust and corrosion resistant
- Reduces chilling and stress on pigs
- Engineered for deep pit buildings
- Excellent impact resistance
- Traction bars and reinforced deep cross ribs enhance slat strength

REVERSIBLE MAKING INSTALLATION AS EASY AS...



Snap Together for Fast and Easy Assembly. No Special Tools Required!



5" PERMABEAM

When selecting Double L beam you are selecting the strongest fiberglass support beam on the market. Choosing high density beam reduces sponginess of your flooring and provides a strong support structure.

7'	10'	16'	20'	24'
Part 123057	Part 1230510	Part 1230516	Part 1230520	Part 1230524

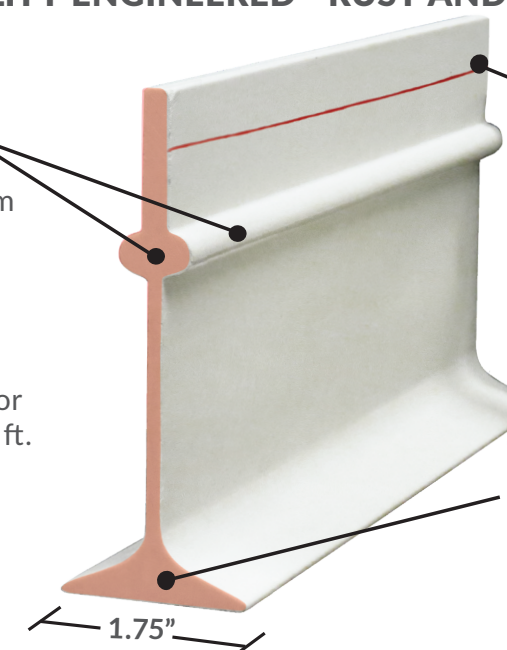
HIGH-QUALITY ENGINEERED - RUST AND CORROSION PROOF

SUPERIOR STRENGTH!

- Lateral design stiffener provides straighter beam
- Reduces base rollover factor
- ISO 9001 High Quality Standards
- Clear spans up to 8 ft. for farrowing floors and 10 ft. for nursery floors



MADE IN USA

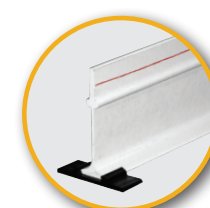


Look for the Double L red line Mark of Quality

CROSS SECTION AREA HAS 14% MORE MASS THAN COMPETITION

- Wider base width for better stability
- Overall mass offers higher load capability with less deflection

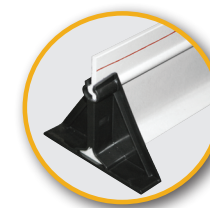
PERMABEAM FLOORING ACCESSORIES



PLASTIC CLIP

Part 12318

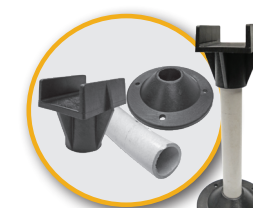
Protects beam from rubbing on concrete



PLASTIC TRIANGLE

Part 12319

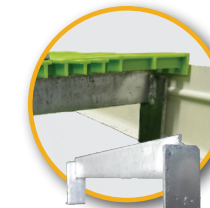
Protects and stabilizes fiberglass beam



LEG SUPPORT KIT

2 Supports - **Part 12301**
1"-12' Tubing - **Part 12300**

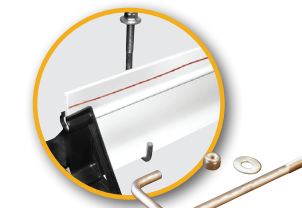
Beam support for longer clear spans



TIE DOWN BAR

Part 12306

Designed to hold crate secure to floor without compromising beam strength



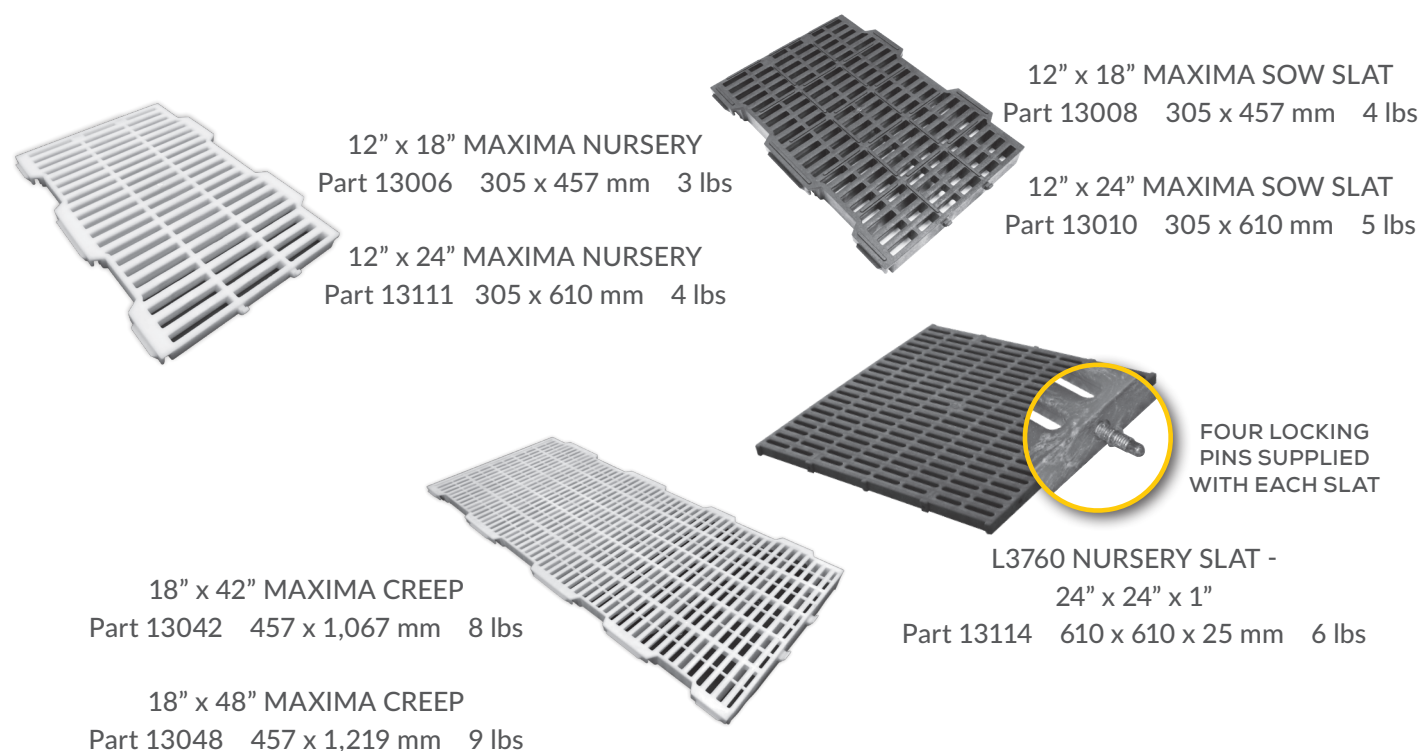
J-BOLT, WASHER, AND LOCKNUT

7.5" (190.5 mm)
Part 12360
4.5" (114.3 mm)
Part 12369

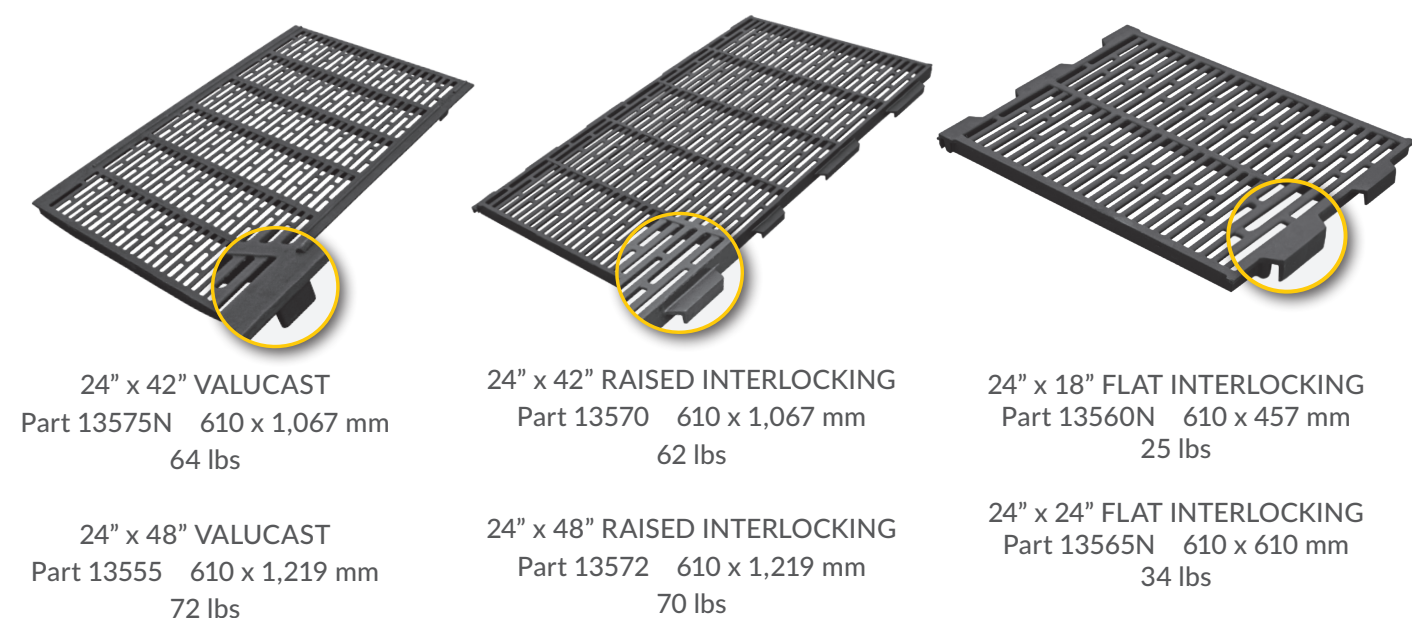
Specifically designed to fit PermaBeam



FILTER-EEZE® POLYPROPYLENE PLASTIC FLOORING

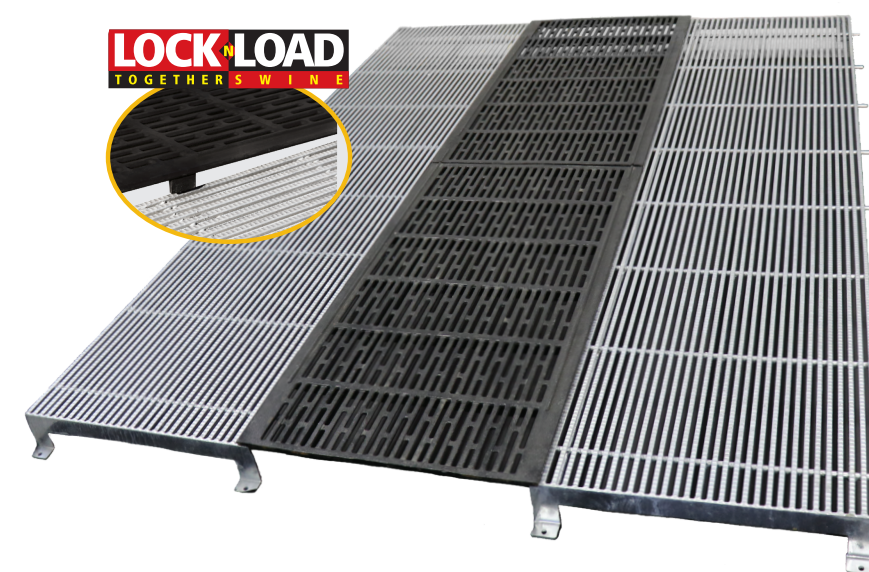


VALUCAST CAST IRON FLOORING

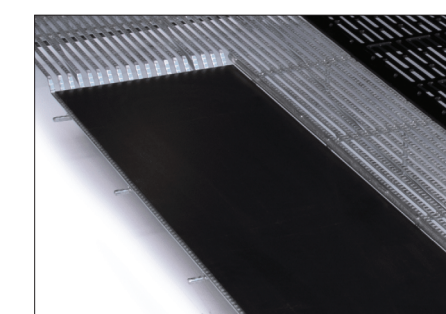
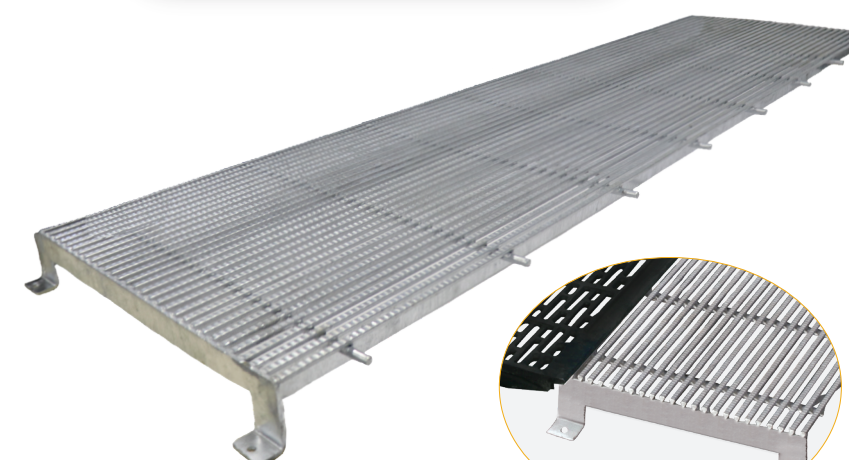


TRI-BAR/ FARROWING FLOOR

Updated Design



Custom Sizes
Available. Contact
for Part Number



- Creep floor - easy to clean and very hygienic
- 50% opening in creep area. Steel is non-porous and thus does not harbor bacteria
- Corrosion-resistant, hot-dipped galvanized steel creep and frame
- Custom produced and delivered based on project needs
- Integrated support bars of 12mm thickness with flat bar
- Designed with a crimped non-slip profile
- Optimized spacing for manure management
- Prevents separation of cast with lock & Load Technology



SCHONLAU: THE PREMIER CAST FLOOR

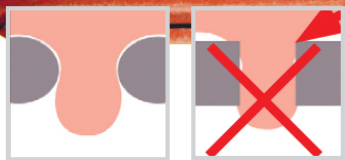
World's Best Cast Iron On The Market For Decades



Schonlau
Stalltechnik

**SOW TOUGH,
TEAT TENDER**

UNIQUE, ROUNDED BARS
PROTECT MILK BAR



NO SHARP EDGES
Roundly shaped ribs: no teat squeezing compared to rectangular 90 degree bars

- 3/8" openings
- Rounded shaped bars with NO sharp edges safer for sows
- Crowned surface and high / low traction bars
- Non-porous, crowned surface easy to clean - no flashing
- Created with open mold process
- ISO 9002 High Quality Standards

24" x 42" SCHONLAU CAST IRON

Red Part No. 13533 82 lbs (37 kg)

24" x 48" SCHONLAU CAST IRON

Red Part No. 13538 91 lbs (41 kg)

SCHONLAU & PLASTIC CREEP



Available in 7 ft., 7 1/2 ft. and 8 ft. lengths

- Lock-n-Load Assembly
- End Supports to promote beam stability
- 5" PermaBeams, Plastic Creep, and Schonlau Cast Iron: the strongest cast iron on the market



WARM SURFACE FOR
THE LITTLE PIGS



COOL SURFACE FOR
THE SOW

SOW TOUGH, PIG TENDER

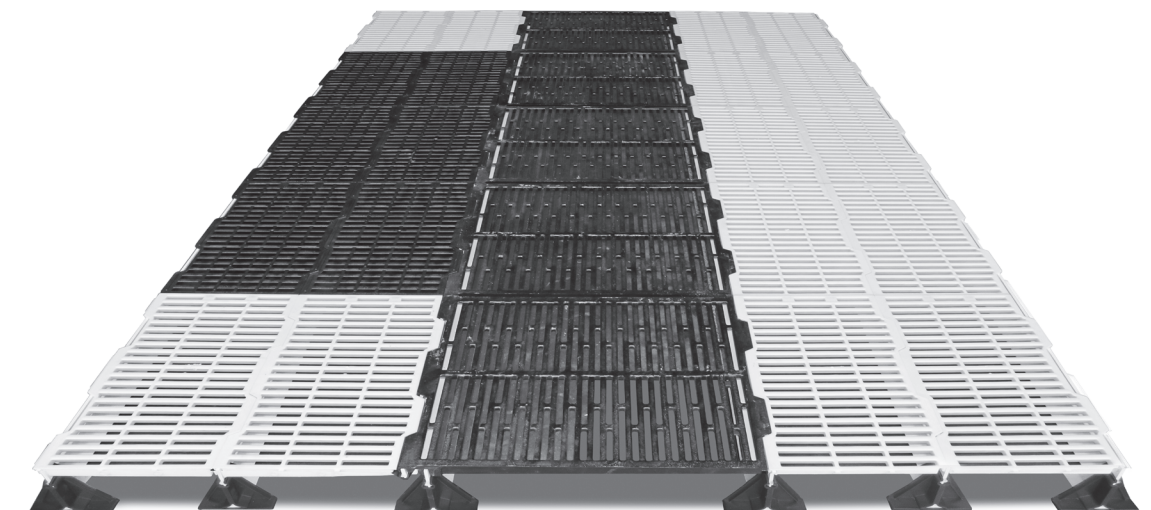
Protect your investment with Double L's combination flooring system.

INTERLOCKING VALUCAST & PLASTIC CREEP

- Lock-n-Load Assembly
- Cast Iron and Creep Slats interlock
- End Supports promote beam stability
- Solid creep panels for creep area
- Excellent wash-ability
- 5' PermaBeams

Available in 7 ft., 7 1/2 ft., and 8 ft. lengths

LOCK-n-LOAD
TOGETHER S W I N E



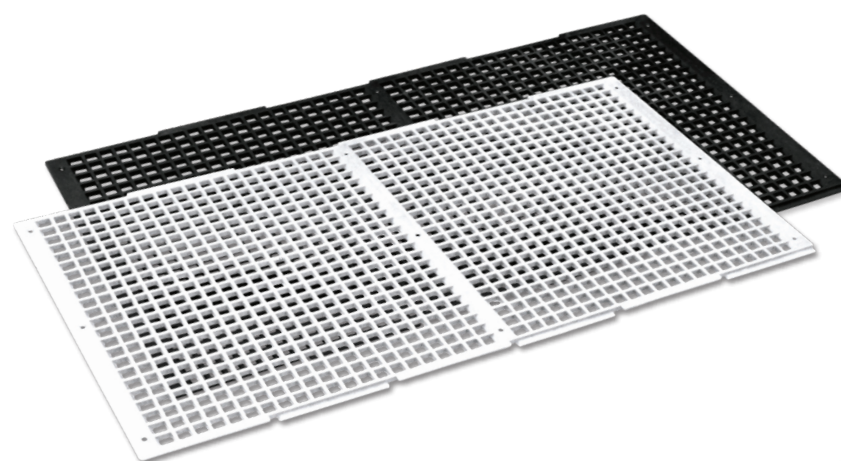
3/8" CAST IRON
FARROWING
FLOOR CLIP
Part 12317

Holds cast iron together, preventing it from separating.
All stainless steel construction.



RED ROOSTER FLOORING

Available as overlapping or non-overlapping floors and great for birds of all sizes.



Non-Overlapping

Dimensions: 24.4" x 48" x 0.5"
Thickness: 0.5"
Hole Openings: 13/16" x 13/16"

Part 13504F
White Floor

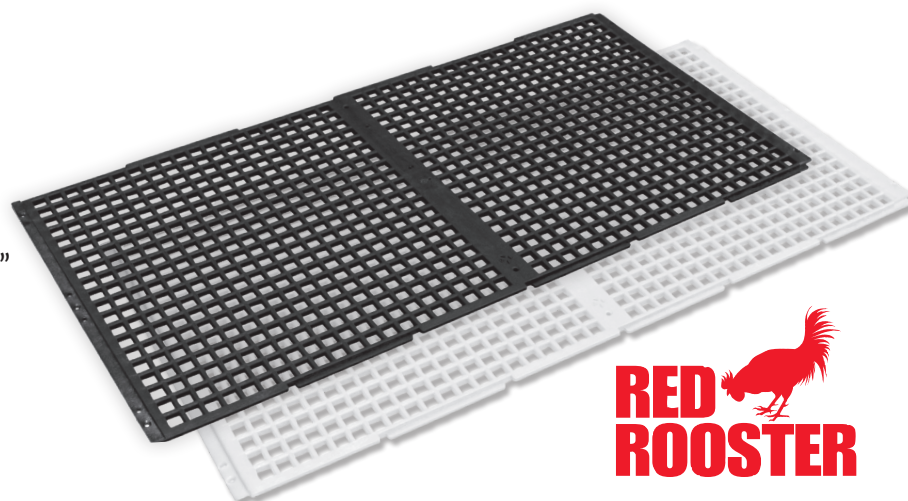
Part 13507F
Black Floor

Overlapping

Dimensions: 23.9" x 48.6" x 0.5"
Thickness: 0.5"
Hole Openings: 3/4" x 3/4"

Part 13502
White Floor

Part 13501
Black Floor

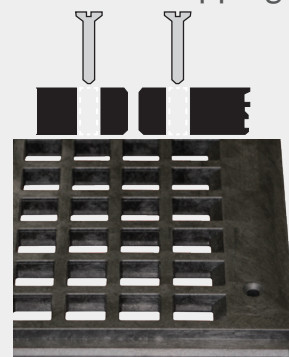


**RED
ROOSTER**



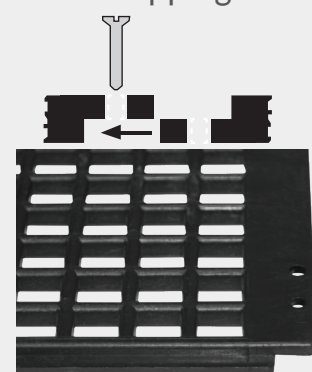
MADE IN USA

Non-Overlapping



3/4" x 3/4"
Square Hole Openings

Overlapping



13/16" x 13/16"
Square Hole Openings

RED ROOSTER FLOORING FEATURES

NON-CORROSIVE
AND NON-POROUS HIGH
QUALITY POLYPROPYLENE
SURFACE

Will not harbor bacteria,
rot, rust, or absorb water like
wooden slats

0.5 THICKNESS

EASY TO POWER
WASH CLEAN

Approx. 55%
Manure filtration

REINFORCED
PRE-MOLDED
SCREW HOLES
For fast assembly

CAN BE CUT TO
SPECIFIC SIZES

REDUCTION OF BREAST
BLISTERING & SLIVERS

No reports of breast blistering on
red rooster floor ... And no chance of
wooden slivers ever

REDUCTION OF
FOOT PROBLEMS

Birds are protected
from foot pad and hock
injuries

DESIGNED FOR
4 RUNNER FLOORING
SYSTEMS

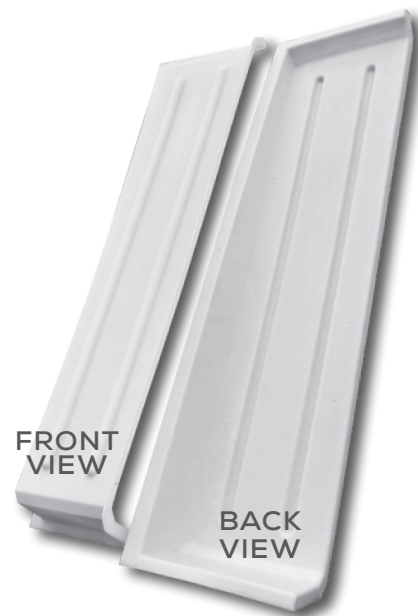
- 50% open area permits excellent manure filtration with minimum build-up for a clean, sanitary environment.
- Easily installed on 2" x 4" or 2" x 6" wooden supports - flooring can be cut to specific sizes.
- Smooth, non-porous surface is easy to clean and disinfect by carrying 4' sections out of the house for easy cleaning with pressure washer without having to disassemble flooring.
- Used with success under birds of all sizes - from little chick to large chicken and is a stable structure for walking with minimal sag.
- Does not deteriorate or need to be replaced after every flock of birds like wooden slats.
- Neutral polypropylene does not absorb body heat from birds and improves production rates





ALL-SEASON CURTAIN POCKETS

Seal Curtain Edges and Protect Curtain from Wind Damage



- Versatile, all-season curtain pockets designed with special UV stabilizers to eliminate plastic degradation in sunlight
- Seal curtain edges and protect curtain from wind damage
- Rotomolded of non-corrosive polyethylene, providing added strength and durability
- Install in minutes with just a handful of screws
- Tapered from 2" at the top to 6" at the bottom of the curtain pocket



PCP1866

Part 16495

18" x 66"H (457.2 x 1,676.4 mm)
21 lbs / pr. (9.5 kg)

PCP1878

Part 16494

18" x 78"H (457.2 x 1,981.2 mm)
22 lbs / pr. (10.0 kg)

PCP1884

Part 16498

18" x 84"H (457.2 x 2,133.6 mm)
23 lbs / pr. (10.4 kg)

SINGLE STAGE THERMOSTAT

Designed to provide precise control of heating, cooling, and ventilation systems



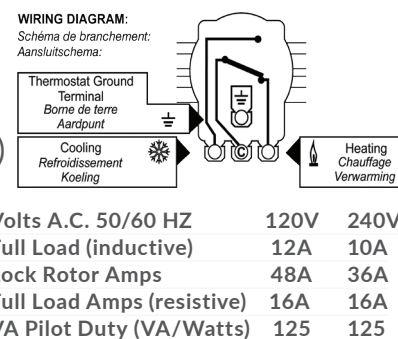
Adjustable knob allows for easy recalibration

TH415

Part 50165

Temperature Range: 40° to 104° F (4° to 40° C)

- Designed to provide precise control of heating, cooling, and ventilation systems in corrosive environments
- Fast responding stainless steel sensor resists corrosion
- Adjustable dial for simple calibration in the field
- Accurate temperature control with long life in livestock confinement buildings
- Water-resistant NEMA 4x enclosure resists airborne contaminants



PVC CREEP DIVIDERS EASY TO INSTALL

Durable and Warmer Than Metal



PVC Divider
Part 12837 for 37"
or 12890 for 90"

- Offered in 37" or 90" wide sizes
- 7/8" thickness
- Easy to install and clean
- Lightweight



2-Way Post
Part 12560-14



U-Channel
Part 12560-20

30" X 36" TWO-WAY SORTING PANEL

Bio-secure - No Seams to Split Open



Part 16460
30" x 36" (762 x 914.4 mm)
14 lbs (6.4 kg)

- HDPE solid Plastic - No Place for Germs
- Molded into one solid piece with no seams to split open, leaving no place for germs to hide



Will flex slightly with applied weight of nearly 200 lbs (90.7kg), but it will not break



Blow-molded hollow panels harbor germs and provide hiding place for bacteria and rodents





4" POLY FEED HOPPER

Tapered Sides and Front to Minimize Feed Loss



Part 16454

14"L x 6.5"W x 13.25"H
Tapered Side: 12" (304.8 mm)

- Easy to hand feed sows
- Easily assembled on feed tube
- Made of rotomolded polyethylene
- Holds up to 20 lbs (9.1 kg)
- Durable and easy to clean
- Tapered front helps minimize feed loss



STF1415 HDPE SOW FEEDER



STAINLESS STEEL
LIP PROTECTOR

Part 16450

14"Wx15"H (355.6mm x 381mm)

- Reduces feed waste with rounded corners / bottom
- Decreases feed build up and bacteria
- Corrosion resistant and power wash friendly
- Reinforced at feeder rod locations to reduce wear



Molded mounting
foot sits on lower bar
of front gate holding
feeder in place

Eliminates the following cost nightmares
caused by stainless steel sow feeders:

- Bent feeders
- Separated seams
corners and holes
to reinforce
- Thin steel to weld



This page was intentionally left blank.



DOUBLE L GROUP LLC

POULTRY DIVISION • SWINE DIVISION • LAYER DIVISION • DAIRY DIVISION

- Circulations Fans
- Stir Fans
- Exhaust Fans
- Shutters
- Darkout
- Ceiling Inlets
- Actuated Wall Inlets
- Wall Inlets
- Gravity Wall Inlets
- Wind/Sun Deflectors
- Winch Systems
- Linear Actuator
- Rack & Pinion
- Tunnel Doors
- Evaporative Cooling
- Pig Mat
- Nursery Floor
- Permabeam
- Farrowing Floor
- Poultry Floor
- Thermostats
- Curtain Pockets
- Pop Doors
- Feeders
- Sorting Panel
- Creep dividers
- Weatherhood

Since 1973, Double L has committed to providing high-quality products and services worldwide that are based on value, customer's needs, and excellent sales support.

Double L Group, LLC strives to provide our distributors and customers with innovative products that offer the best return on investment.

CONTACT DOUBLE L FOR:

- High Quality Materials and Products
- Quality Design for Compact Shipping
- BESS Lab Testing of Ventilation Products
- Exceptional Service on all Products
- Informative Website with Informational Product Videos

2020 Beltline Road | PO Box 324 | Dyersville, Iowa 52040-0324
800-553-4102 | 563-875-6257 | sales@doublel.com | www.doublel.com



Disclaimer of warranties and limitation of remedies: the manufacturer of these products provides a limited warranty and Double L Group LLC will provide further information relating to the manufacturer's warranty upon request. Subject to that manufacturer warranty, for which the manufacturer and not Double L Group LLC is solely liable, these products are offered by Double L Group LLC as is, with all faults and without any representations by Double L Group LLC as to quality, performance or suitability. Double L Group LLC specifically disclaims any and all warranties, express or implied, including without limitation all warranties of merchantability or fitness for a particular purpose. Under no circumstances shall Double L Group LLC or any of its employees, directors, officers or agents be liable, in tort, contract or otherwise, for any direct or indirect losses or damages in any way arising from or related to any product purchased, including without limitation the condition or performance of the product, whether such damages are general, special, consequential, incidental, economic, exemplary or otherwise. This includes but is not limited to damage or injuries to person, property, or animals, business interruption or other economic loss. This disclaimer of liability shall apply even if an authorized representative of Double L Group LLC has been advised of or should have known of the possibilities of such damages.